



**AUSTRALIAN  
WEIGHING  
EQUIPMENT**  
*Way ahead in Weighing*

PRODUCT GUIDE

# AKA SHEAR BEAM LOAD CELL

---





## ■ FEATURES

- A functional equivalent for commonly available Australian Load Cells. This Load Cell has 2.2 mV/V output, Superior Stainless Steel construction and Laser Welded Seal (IP68\*) Construction. Most similar load cells have only Bonded Sealed IP67 or less.
- High Accuracy 0.03% Combined Error
- Integral mounting step reduces need for spacer plate & improves mounting.
- Range from 125kg to 10,000kg.
- Matched outputs to 0.10% make corner adjustments un-necessary in most applications.
- Load Cells 100% tested to guarantee load & thermal specifications met or exceeded.

## ■ APPLICATIONS

- Functional replacement for KA, PSB
- Concrete Industry Weighing & Batching
- Industrial Floor Scales
- Batch weighing
- Hopper filling and level control
- Food and Chemical Industry
- All Floor Scales
- Batch Weighing
- Hopper Filling & Level Control
- All Industrial weighing

## ■ SPECIFICATIONS

|                           |                  |                                     |                               |
|---------------------------|------------------|-------------------------------------|-------------------------------|
| Capacity                  | 125kg - 10,000kg | Excitation (Maximum)                | 18VDC                         |
| Safe Service Load         | 100% Capacity    | Input Resistance                    | 385Ω ± 10Ω                    |
| Ultimate Load             | 300% Capacity    | Output Resistance                   | 350Ω ± 3Ω                     |
| Safe Side Load            | 100% Capacity    | Insulation Resistance               | >5,000MΩ                      |
| Full Load Output          | 2.2mV/V ± 0.10%  | Material:                           |                               |
| Combined Error            | <0.03% FS        | (stainless)                         | Polished 400/600 Series Steel |
| Non Repeatability         | <0.01% FS        | Environmental Protection Rating*    |                               |
| Creep/Zero Return (30min) | <0.02% FS        | Loadcells £250kg IP67 - bonded seal |                               |
| Zero Balance              | <1% FS           | Loadcells >250kg IP68 - welded seal |                               |
| Span temperature effect   | <30ppm/°C        | Cable length                        | 5m.                           |
| Zero temperature effect   | <20ppm/°C        | Cable type                          | 5.5mm OD 4 core screened.     |
| Compensated Range         | -10°C to +40°C   | Cable Entry                         | Gland & Cable Strain Relief.  |
| Operating Range           | -18°C to +65°C   |                                     |                               |
| Excitation (Recommended)  | 5VDC to 12VDC    |                                     |                               |



## **AKA Shear Beam Load Cell**

### **■ DESCRIPTION**

**Description:-** The AKA Shear Beam Load Cell is a functional equivalent to the popular Australian Load Cells model KA, AKA and PSB. For replacement of these Loadcells our product offers superior specifications at keen prices. The load bearing hole has been threaded to increase your options.

For new designs we recommend the AGX-1 Load Cells which has a larger range of accessories and even better prices.

The AKA Shear Beam is ruggedly built of high strength Stainless Steel at tool steel prices!. It has generously sized attachment threads and the load bearing hole supports threaded foot assemblies in addition to the original Load Cell through holes.

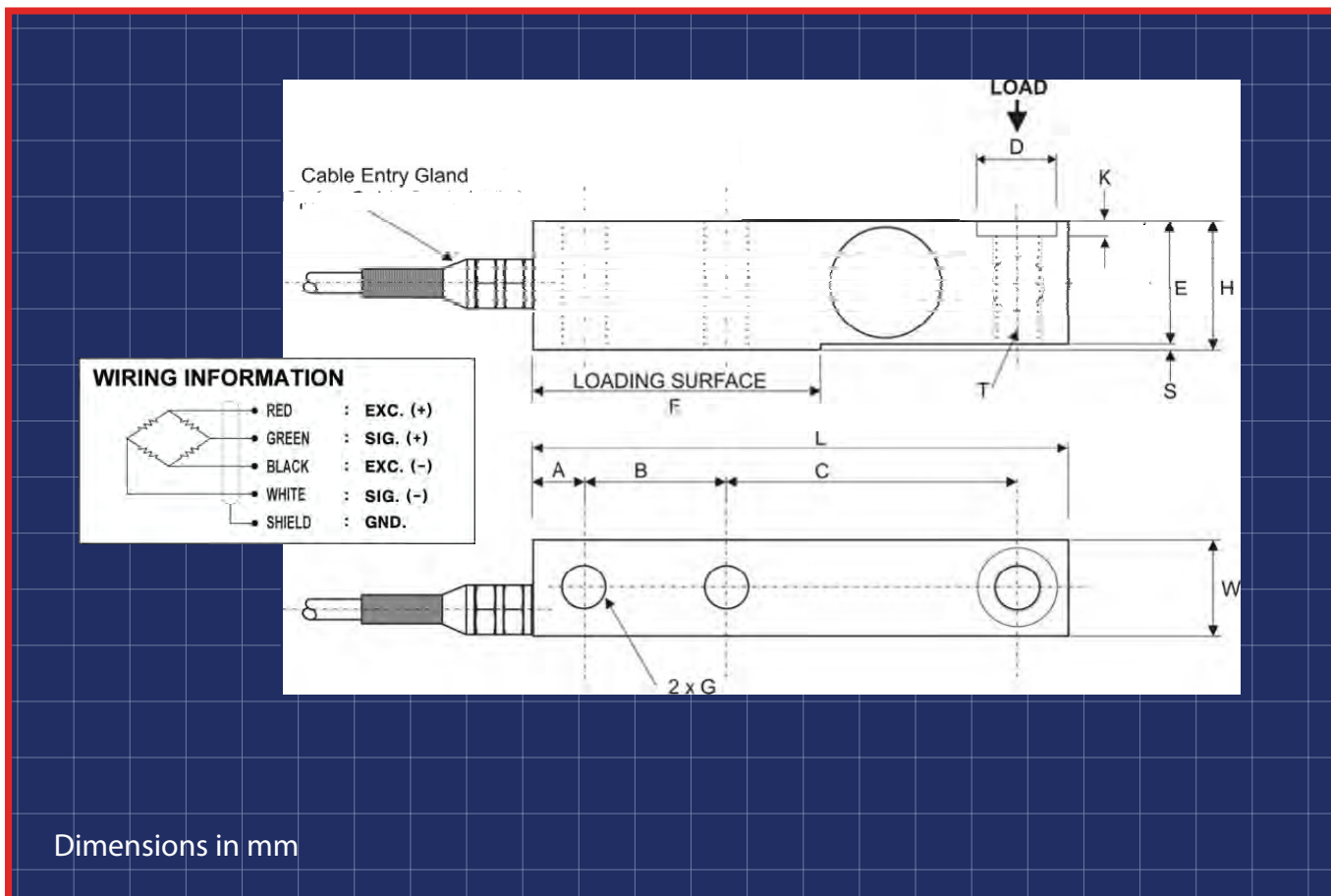
The AKA Laser\* Welded Seal Construction assures users of its IP68 Environment Protection Rating and provides a safe environment for the long term protection of its internal construction. A range of mounting accessories is available.

### **■ ORDERING**

AKA-125SS-125Kg IP67 Shear Beam Load Cell\*  
AKA-250SS-250Kg IP67 Shear Beam Load Cell\*  
AKA-500SSH-500Kg IP68 Shear Beam Load Cell  
AKA-1TSSH-1000Kg IP68 Shear Beam Load Cell  
AKA-2.5TSSH-2500Kg IP68 Shear Beam Load Cell  
AKA-5TSSH-5000Kg IP68 Shear Beam Load Cell  
AKA-10TSSH-10,000Kg IP68 Shear Beam Load Cell  
\*125kg and 250kg models are potted sealed IP67



**■ DIMENSIONS**



Dimensions in mm

| CAP kg         | A    | B  | C    | D     | E    | F   | G     | H    | K   | L     | S   | T                        | W    |
|----------------|------|----|------|-------|------|-----|-------|------|-----|-------|-----|--------------------------|------|
| 125<br>250     | 10.5 | 33 | 57.0 | NA    | 20.0 | 53  | &8.5  | 25.0 | NA  | 112.0 | 5.0 | M10x1.5                  | 19.0 |
| 500<br>1,000   | 14.0 | 38 | 61.5 | &12.5 | 27.0 | 64  | &10.5 | 29.5 | 3.0 | 124.0 | 2.5 | M12x1.75<br>with 10.3 ID | 26.5 |
| 2,500<br>5,000 | 21.0 | 60 | 88.0 | &31.0 | 42.5 | 103 | &21.0 | 49.0 | 4.0 | 189.0 | 6.5 | M24x3<br>with 21.25 ID   | 40.0 |
| 10,000         | 25.0 | 60 | 117  | &41.0 | 57.5 | 118 | &26.0 | 67.0 | 4.0 | 226.5 | 9.5 | M30x3.5<br>with 26.5 ID  | 47   |



■ **AWE - THE BEST IN THE BUSINESS**

AWE has built a reputation in providing world class products and services to customers from a wide range of industries for many unique applications. All the products come with AWE Quality Guarantee- giving you the assurance that they have been tested to meet or exceed the specifications and requirements of your application. At AWE, it's more than just delivering perfectly-designed equipment, it also requires a team of dedicated people who will back you up with great service and support. Any servicing, installation and technical support issues you encounter can be addressed either onsite or remotely by our engineers and tradesmen who carry qualifications as:

- Licensed Tradesmen
- Mechanical Engineers
- Electrical Engineers
- Structural Engineers
- Draftsmen
- Fitter & Turners
- Boilermakers
- Fully Qualified Scale Makers
- Electronic Technicians
- Instrument Fitters
- Electricians
- Service Technicians
- Project Managers
- Formworkers
- Concreters

Call AWE today.



If you have questions about

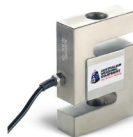
- **weighing equipment**
- **packaging equipment**
- **bulk materials handling**
- **componentry**

call the sales team at *AWE Group* to find the right solution for your individual needs.

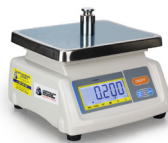
■ **AWE PRODUCT RANGE**



**Weighbridges**



**Load Cells**



**Scales**



**Crane Scales**



**Indicators**



**Packaging Equipment**



**Onboard Weighing**



**Batching Consoles**



**Test Weight**



**Maintenance**



## ■ WHO IS “AUSTRALIAN WEIGHING EQUIPMENT GROUP”

Jeff & Trevor Baillie started Australian Weighing Equipment (or AWE) in 1981, focusing on weighing solutions based on engineering principles. For nearly 40 years AWE has built its reputation as a leading supplier of robust weighing, packaging & bulk handling equipment. Our innovative engineering and continuous product developments have led to designs that will stand up to the rigours and demands of your applications.

AWE has increased its investment in manufacturing facilities with a new 3,200sq/m factory in Sydney which has

- A CNC Machine Shop
- Heavy Metal Fabrication Shop
- Larger work areas for our team of qualified tradesman

Acquisitions of Bradwood Packaging and Dendy Packaging and Design Engineering has increased our packaging and engineering experience.

In 2008, AWE established a manufacturing facility in China - AWE Group Packaging and Bulk Materials Handling Equipment, a purpose-built 5,000sq/m factory in Suzhou China (70kms From Shanghai).

All of the products we offer are Australian designed and manufactured under our strict quality control system in our own factories both locally and internationally.

## ■ LOCATIONS OF AUSTRALIAN WEIGHING EQUIPMENT



Australian Weighing  
Equipment - Sydney Office

8 Heald Road  
Ingleburn NSW 2565



Australian Weighing  
Equipment - Melbourne Office

37 Barrie Road  
Tullamarine, VIC, 3043



Australian Weighing  
Equipment - Brisbane Office

7 Darnick Street  
Underwood, QLD1 4119

## ■ AUSTRALIAN WEIGHING EQUIPMENT ON SOCIAL MEDIA



@AustralianWeighingEquipment



@australianweighingequipment



/company/awegrouppaustralia



www.youtube.com/AustWeighing



www.awe.com.au

SCAN HERE



www.awe.com.au

Brochure: 150920  
Version: 140820

Dealer's Information: