



**AUSTRALIAN
WEIGHING
EQUIPMENT**
Way ahead in Weighing

PRODUCT GUIDE

TITAN LOAD CELL

Nmi trade approved & The strongest
weighbridge load cell available
on the market.





Titan Weighbridge Load Cell

■ KEY FEATURES

- Strong & durable - industrial strength design
- Tested in harsh conditions: suited for indoor or outdoor applications
- Industrial precision weighing applications
- Simple to install
- IP68 water proof seal option available
- Ideal load cell for conversions:
- extra low profile fits into any existing application
- Ideal for application requiring protection from 4 directional side forces
- Legal-for-trade in new & retrofit installations
- Incredible 10 year guarantee with a maintenance agreement
- Lightning protection available



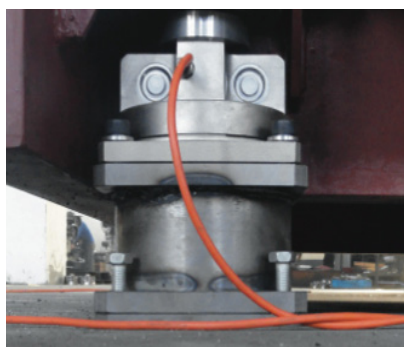
■ APPLICATIONS

- Large capacity bins
- Rail weighbridges
- Silos
- Weighbridges
- Hostile environments
- Large capacity filling & level control
- Used where industrial construction is essential: e.g. hopper, tank & silo weighing in hostile environments
- Conversions

▶ Accessories



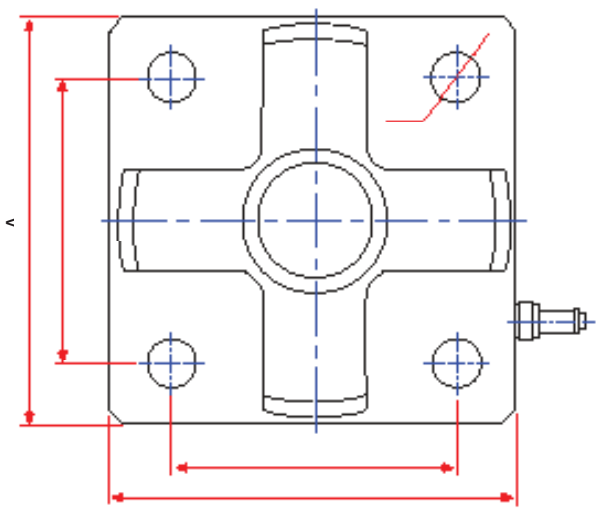
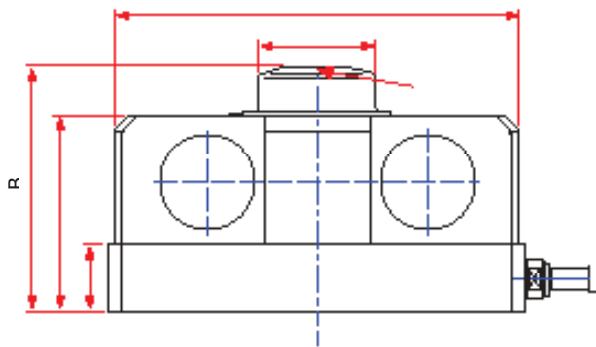
▶ With Mounting Kit



The strongest weighbridge load cell anywhere



■ **DIMENSIONS**



Top & bottom dimensions

| | 10-40t | 50t | 100t | 200t |
|------|--------|-----|------|------|
| DIMN | mm | mm | mm | mm |
| A | 140 | 156 | 200 | 230 |
| B | 84 | 93 | 105 | 140 |
| C | 23 | 23 | 27 | 30 |
| D | 67 | 70 | 80 | 115 |
| E | 100 | 130 | 160 | 180 |
| F | 100 | 130 | 160 | 180 |
| G | 40 | 50 | 63 | 80 |
| H | 138 | 154 | 196 | 226 |
| I | 13 | 13 | 17 | 22 |
| SR | 76 | 100 | 300 | 500 |

■ **SPECIFICATIONS**

| | |
|------------------------------|--|
| Rated capacity | 10,000kg, 30,000kg, 40,000kg, 50,000kg, 100,000kg, 200,000kg |
| Certification | NMI trade approved - NMI S563 |
| Minimum dead load | 250kg, 500kg |
| Output | 2 mV/V |
| Nonlinearity | < ± 0.02% of full scale |
| Hysteresis | < ± 0.02% of full scale |
| Repeatability | < ± 0.01% of full scale |
| Creep (1 hour) | < ± 0.02% of full scale |
| Zero balance | < 1.00% of full scale |
| Temperature effect on zero | < 20 PPM/°C of applied load |
| Temperature effect on output | < 20 PPM/°C of applied load |

| | |
|-------------------------------|-------------------|
| Input resistance (Ω) | 760 ± 10 Ohms |
| Output resistance (Ω) | 700 ± 5 Ohms |
| Insulation resistance | ≥ 5000 MOhms |
| Compensated temperature range | - 10 °C to +50 °C |
| Operating temperature range | - 20 °C to +60 °C |
| Safe overload | 120% of capacity |
| Recommended excitation | 10 VDC/AC |
| Maximum excitation | 20 VDC/AC |
| Cable | Ø5.4mm x 15m |



■ **AWE - THE BEST IN THE BUSINESS**

AWE has built a reputation in providing world class products and services to customers from a wide range of industries for many unique applications. All the products come with AWE Quality Guarantee- giving you the assurance that they have been tested to meet or exceed the specifications and requirements of your application. At AWE, it's more than just delivering perfectly-designed equipment, it also requires a team of dedicated people who will back you up with great service and support. Any servicing, installation and technical support issues you encounter can be addressed either onsite or remotely by our engineers and tradesmen who carry qualifications as:

- Licensed Tradesmen
- Mechanical Engineers
- Electrical Engineers
- Structural Engineers
- Draftsmen
- Fitter & Turners
- Boilermakers
- Fully Qualified Scale Makers
- Electronic Technicians
- Instrument Fitters
- Electricians
- Service Technicians
- Project Managers
- Formworkers
- Concreters

Call AWE today.



If you have questions about

- **weighing equipment**
- **packaging equipment**
- **bulk materials handling**
- **componentry**

call the sales team at *AWE Group* to find the right solution for your individual needs.

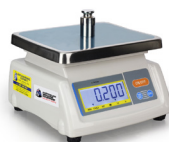
■ **AWE PRODUCT RANGE**



Weighbridges



Load Cells



Scales



Crane Scales



Indicators



Packaging Equipment



Onboard Weighing



Batching Consoles



Test Weight



Maintenance



■ WHO IS “AUSTRALIAN WEIGHING EQUIPMENT GROUP”

Jeff & Trevor Baillie started Australian Weighing Equipment (or AWE) in 1981, focusing on weighing solutions based on engineering principles. For nearly 40 years AWE has built its reputation as a leading supplier of robust weighing, packaging & bulk handling equipment. Our innovative engineering and continuous product developments have led to designs that will stand up to the rigours and demands of your applications.

AWE has increased its investment in manufacturing facilities with a new 3,200sq/m factory in Sydney which has

- A CNC Machine Shop
- Heavy Metal Fabrication Shop
- Larger work areas for our team of qualified tradesman

Acquisitions of Bradwood Packaging and Dendy Packaging and Design Engineering has increased our packaging and engineering experience.

In 2008, AWE established a manufacturing facility in China - AWE Group Packaging and Bulk Materials Handling Equipment, a purpose-built 5,000sq/m factory in Suzhou China (70kms From Shanghai).

All of the products we offer are Australian designed and manufactured under our strict quality control system in our own factories both locally and internationally.

■ LOCATIONS OF AUSTRALIAN WEIGHING EQUIPMENT



Australian Weighing
Equipment - Sydney Office

8 Heald Road
Ingleburn NSW 2565



Australian Weighing
Equipment - Melbourne Office

37 Barrie Road
Tullamarine, VIC, 3043



Australian Weighing
Equipment - Brisbane Office

7 Darnick Street
Underwood, QLD1 4119

■ AUSTRALIAN WEIGHING EQUIPMENT ON SOCIAL MEDIA



@AustralianWeighingEquipment



@australianweighingequipment



/company/awegrouppaustralia



www.youtube.com/AustWeighing



www.awe.com.au

Dealer's Information:

SCAN HERE



www.awe.com.au

Brochure: 150920
Version: 140820