



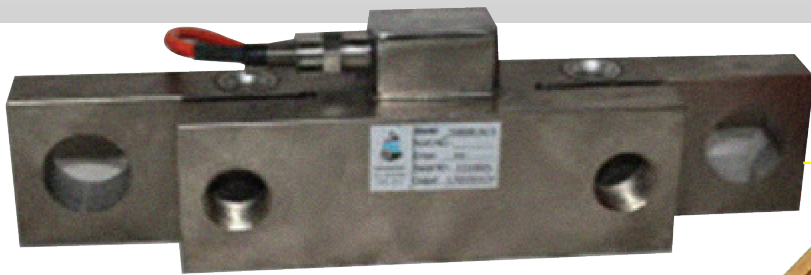
**AUSTRALIAN
WEIGHING
EQUIPMENT**
Way ahead in Weighing

PRODUCT GUIDE

SCORPION ONBOARD WEIGHER



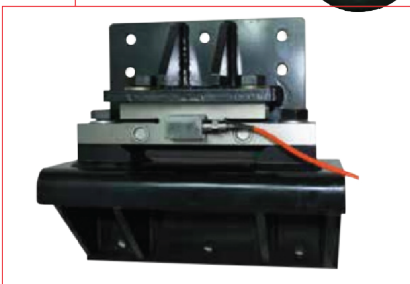
- Suitable for all types of trucks
- Dashboard indicator and load cell mounting bracket included
- Affordable and reliable solution





**SUITABLE
VEHICLES**

Flatbeds, Semi-Trailers
Tautliners, Dump Trucks
Tankers, Tippers
Van for Refuse
Collection



■ Scorpion Load Cell with Mounting Bracket



■ GS100P Indicator

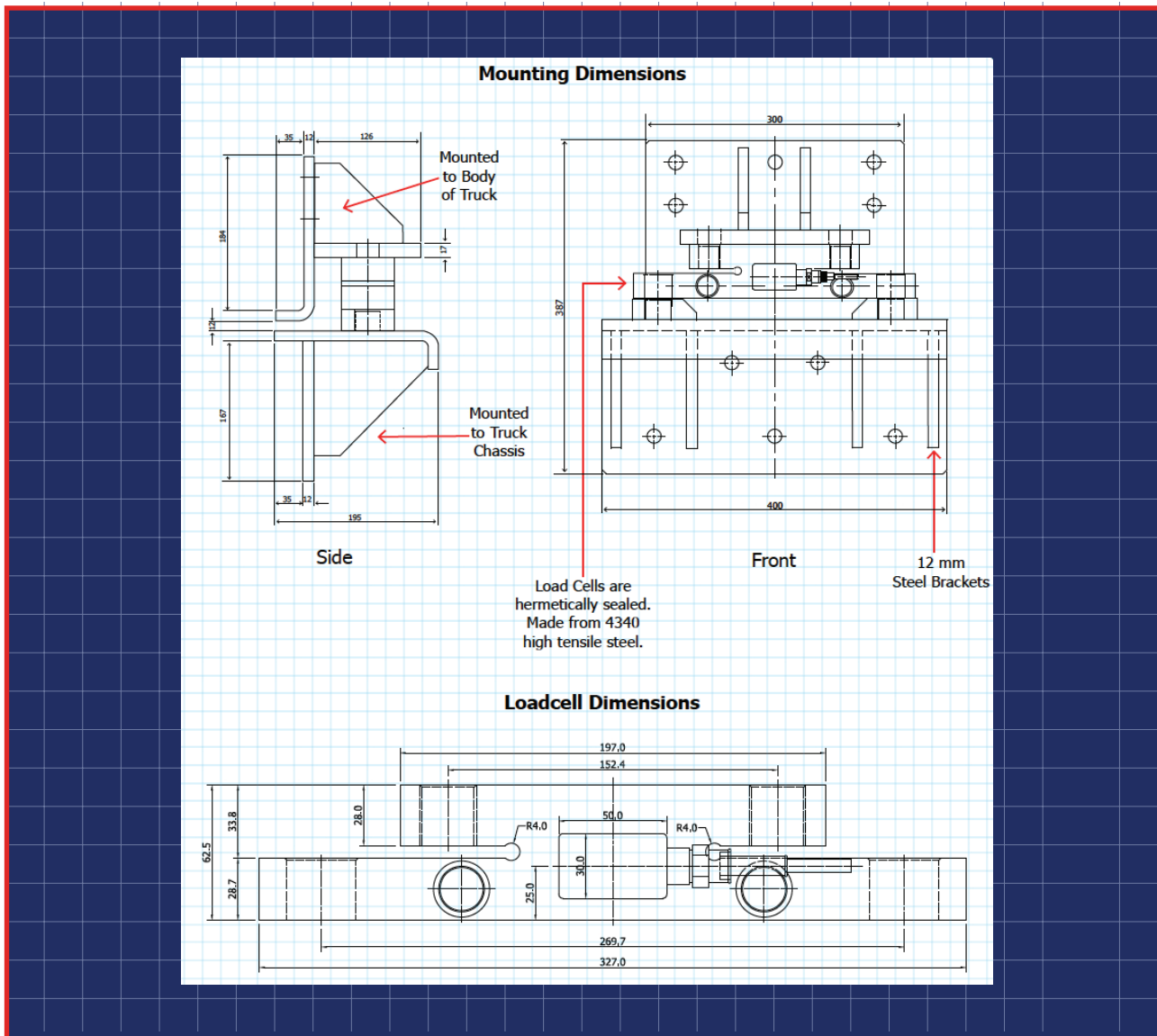
■ FEATURES & BENEFITS

- Can be retro-fitted to ANY truck
- Weighs truck in stationary position
- Load cells made from 4340 high tensile steel
- Hermetically sealed load cells work in harsh environments
- Suitable for trucks & trailers that carry payload using chassis & body structure
- Installation requires separation of the body from the chassis so load cells can be fitted between them
- Summing box functionality allows you to average the inputs from all load cells & single outputs:
i.e. Individual Axle Weights, Totals, Groups, Gross/Net
- Pre-calibrated for 0 to 10,000 counts
(2mV/V sensor gain at full scale)
- Can be re-calibrated using the Auto (apply mass) or mV/V method
- Adjustable zero offset and span
- Easy setup - Intuitive text prompts get you up and running quickly
- Security feature protects your calibration settings
- Overload alarms can be defined to prevent fines
- Outputs can be customised
- Option: Up to 4 digit input for these commands :-
Hold, Lock, Tare, Batch, Zero, Peak Hold or Print remote commands

**Ideal on any truck
needing to check load
weights anywhere
and anytime**



■ DIMENSIONS



■ SPECIFICATIONS

Order Code	AWESCORPIONxxx
Load cell Material	4340 High Tensile Steel
Weight	6.3 KG
Loadcell Protection	P67
Dynamic Capacity	5,000 KG
Static Capacity	10,000 KG
Rated Output (mV/V)1	.50 (±) 0.015
Nonlinearity	(±) 0.03% of Full Scale
Repeatability(±) 0.03% of Full Scale
Creep (30 Minutes)(±) 0.02% of Full Scale
Zero Balance(±) 1.0% of Full Scale
Temperature Effect on Zero	0.02% of Full Scale/10°C

Temperature Effect on Output	0.02% of Full Scale/10°C
Input Resistance	350 Ω
Output Resistance	350 Ω
Insulation Resistance	≥ 5,000 MΩ
Excitation Voltage up to	15V (DC)
Compensated Temperature Range	-10°C to +50°C
Operating Temperature Range	-20°C to +60°C
Safe Overload	-20°C to +60 °C
Cable-	Orange Polyurethane 4 Core - 10 Metres
Cable Colour CodeS	Signal: Green (+) White (-) Input Excitation: Red (+) Black (-)



■ **AWE - THE BEST IN THE BUSINESS**

AWE has built a reputation in providing world class products and services to customers from a wide range of industries for many unique applications. All the products come with AWE Quality Guarantee- giving you the assurance that they have been tested to meet or exceed the specifications and requirements of your application. At AWE, it's more than just delivering perfectly-designed equipment, it also requires a team of dedicated people who will back you up with great service and support. Any servicing, installation and technical support issues you encounter can be addressed either onsite or remotely by our engineers and tradesmen who carry qualifications as:

- Licensed Tradesmen
- Mechanical Engineers
- Electrical Engineers
- Structural Engineers
- Draftsmen
- Fitter & Turners
- Boilermakers
- Fully Qualified Scale Makers
- Electronic Technicians
- Instrument Fitters
- Electricians
- Service Technicians
- Project Managers
- Formworkers
- Concreters

Call AWE today.



If you have questions about

- **weighing equipment**
- **packaging equipment**
- **bulk materials handling**
- **componentry**

call the sales team at *AWE Group* to find the right solution for your individual needs.

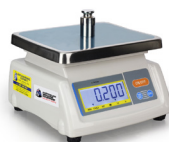
■ **AWE PRODUCT RANGE**



Weighbridges



Load Cells



Scales



Crane Scales



Indicators



Packaging Equipment



Onboard Weighing



Batching Consoles



Test Weight



Maintenance



■ WHO IS “AUSTRALIAN WEIGHING EQUIPMENT GROUP”

Jeff & Trevor Baillie started Australian Weighing Equipment (or AWE) in 1981, focusing on weighing solutions based on engineering principles. For nearly 40 years AWE has built its reputation as a leading supplier of robust weighing, packaging & bulk handling equipment. Our innovative engineering and continuous product developments have led to designs that will stand up to the rigours and demands of your applications.

AWE has increased its investment in manufacturing facilities with a new 3,200sq/m factory in Sydney which has

- A CNC Machine Shop
- Heavy Metal Fabrication Shop
- Larger work areas for our team of qualified tradesman

Acquisitions of Bradwood Packaging and Dendy Packaging and Design Engineering has increased our packaging and engineering experience.

In 2008, AWE established a manufacturing facility in China - AWE Group Packaging and Bulk Materials Handling Equipment, a purpose-built 5,000sq/m factory in Suzhou China (70kms From Shanghai).

All of the products we offer are Australian designed and manufactured under our strict quality control system in our own factories both locally and internationally.

■ LOCATIONS OF AUSTRALIAN WEIGHING EQUIPMENT



Australian Weighing
Equipment - Sydney Office

8 Heald Road
Ingleburn NSW 2565



Australian Weighing
Equipment - Melbourne Office

37 Barrie Road
Tullamarine, VIC, 3043



Australian Weighing
Equipment - Brisbane Office

7 Darnick Street
Underwood, QLD1 4119

■ AUSTRALIAN WEIGHING EQUIPMENT ON SOCIAL MEDIA



@AustralianWeighingEquipment



@australianweighingequipment



/company/awegrouppaustralia



www.youtube.com/AustWeighing



www.awe.com.au

Dealer's Information:

SCAN HERE



www.awe.com.au

Brochure: 150920
Version: 140820