



**AUSTRALIAN
WEIGHING
EQUIPMENT**
Way ahead in Weighing

PRODUCT GUIDE

AML PORTABLE WEIGHBRIDGE

- Quick and easy set-up
- Low profile, portable design
- Trade & Non-Trade versions available



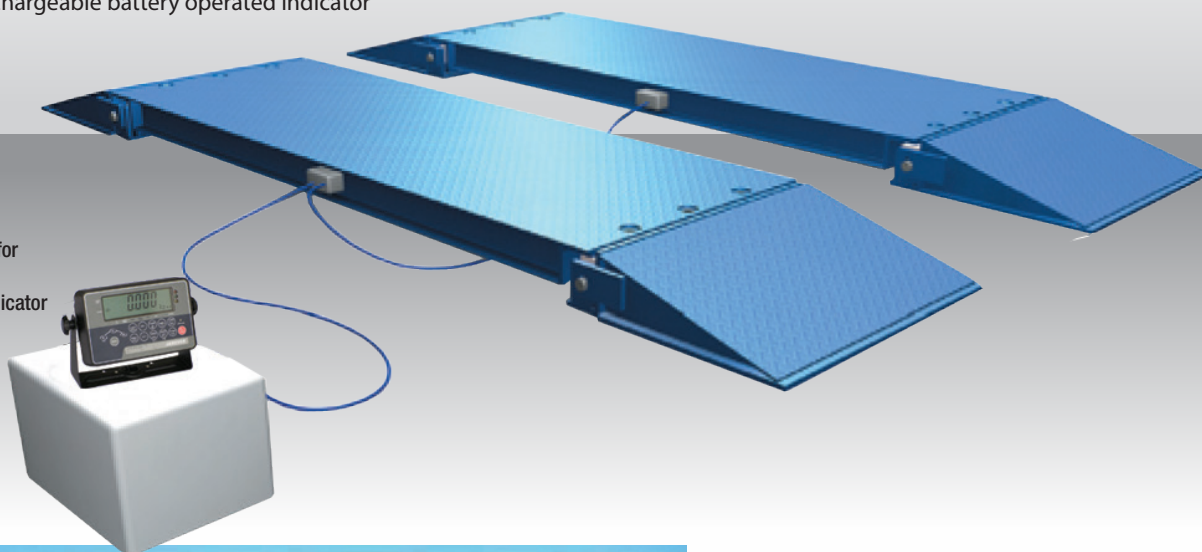


■ FEATURES

- Low profile design
- High accuracy & reliable total vehicle weighing
- Portable design and fast user-friendly installations - pads can be lifted into position with a forklift and set down on hard compacted surfaces
- Heavy-duty steel construction
- Choice of galvanized or painted finish
- Wide range of lengths and capacities available
- Detachable headwork
- Trade & Non-Trade versions available
- High capacity load cells with 100% overload factor
- Hermetically sealed load cells - components protected from hazards
- Rechargeable battery operated indicator

**Dependable,
portable,
high accuracy
axle & total
vehicle
weighing**

Suitable for
use with
AJIK6 indicator

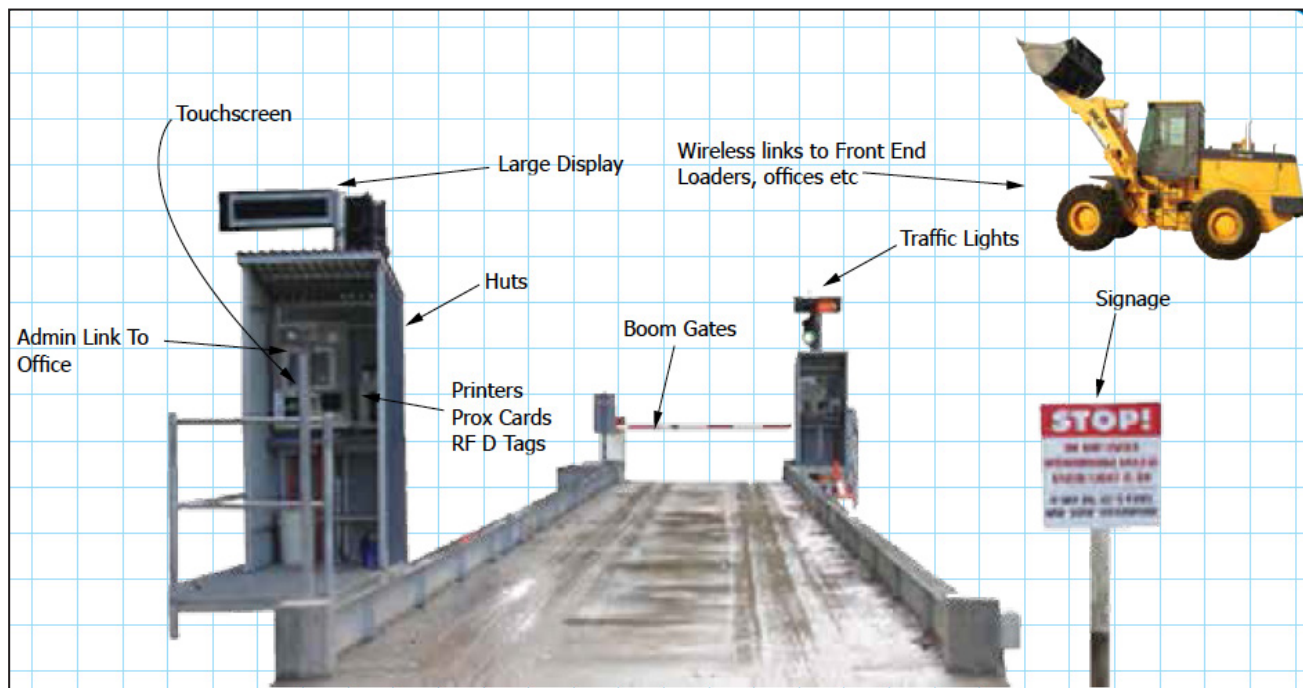


■ BENEFITS

- Great investment for efficiency and safety
- Prevent overloading vehicles and comply with CoR legislation
- Avoid fines, damage to vehicles and possible accidents
- Check incoming goods to ensure you are getting what you pay for
- Check outgoing vehicles to ensure you are not giving away extra goods



■ **ADD-ONS**



■ **SAFETY & TRAFFIC
ADD ONS**

- **SECURITY CAMERAS** →
Video all traffic entering and leaving your weighbridge
- **TRAFFIC LIGHTS** →
Green and Red light to prompt drivers to enter or leave
- **GUARD RAILS** ↓
Safety precaution for vehicles and pedestrians
- **BOOM GATES** ↓
Control traffic entering and leaving the weighbridge



Customise your weighbridge to **increase safety & productivity**

■ **DISPLAY ADD ONS**

- **DIGITAL INDICATORS** →
Capture and view information from weighbridge
- **LARGE REMOTE DISPLAYS** ↓
Suitable for outdoor use and viewing from distances





■ **ADD-ONS**

■ **QUALITY CONTROL ADD-ONS**

- **WHEEL WASHERS** →
Wash any contaminants off wheels of vehicles entering and leaving the site
- **WIRELESS LINK TO FRONT END LOADERS** ↓
Send recorded data from the bucket to the cab, or to the weighbridge office



Comply with EPA regulations -
wheel washers minimise contaminants
entering your site or soiling public roads
exiting your site



■ **REMOTE MANAGEMENT ADD ONS**

- ▢ **DRIVER CONTROL STATIONS**
Run unmanned sites - customisable for your business
- ▢ **CONTROL HUTS** ↗
Built offsite and delivered to your site for quick and easy set-up



■ **ADD-ONS**

■ **REPORTING
ADD ONS**

■ **PRINTERS** →

Print tickets for customer and office records



■ **ACCOUNTING SYSTEM INTERFACING SOFTWARE** ↓

We can customise software to suit your specific requirements:

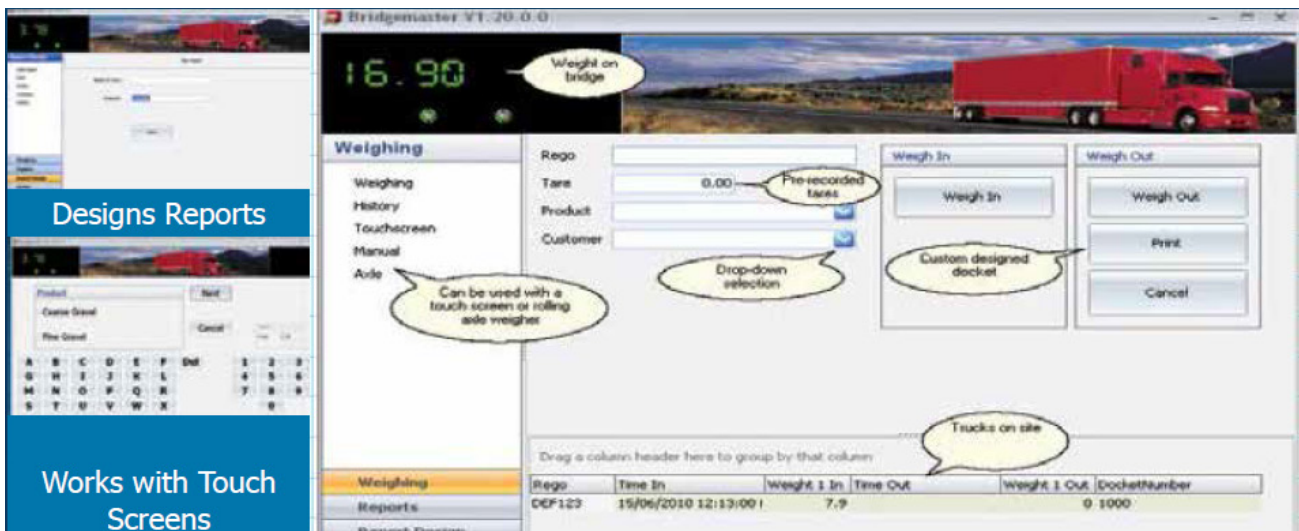
- Records weights into databases
- Integrates with your accounting package
- Print invoices and dockets
- Meets EPA requirements
- Stores transaction history
- Manned & unmanned computer solutions
- Send reports to email via CSV, PDF, TXT with formats of your choice. Fully customisable. Similar functionality you get with MS Access or SQL Databases.
- Print reports on the fly

Our software solutions will help **streamline your business** at the weighbridge and in the admin office

■ **TRUCK FLEET MANAGEMENT SOFTWARE** ↓

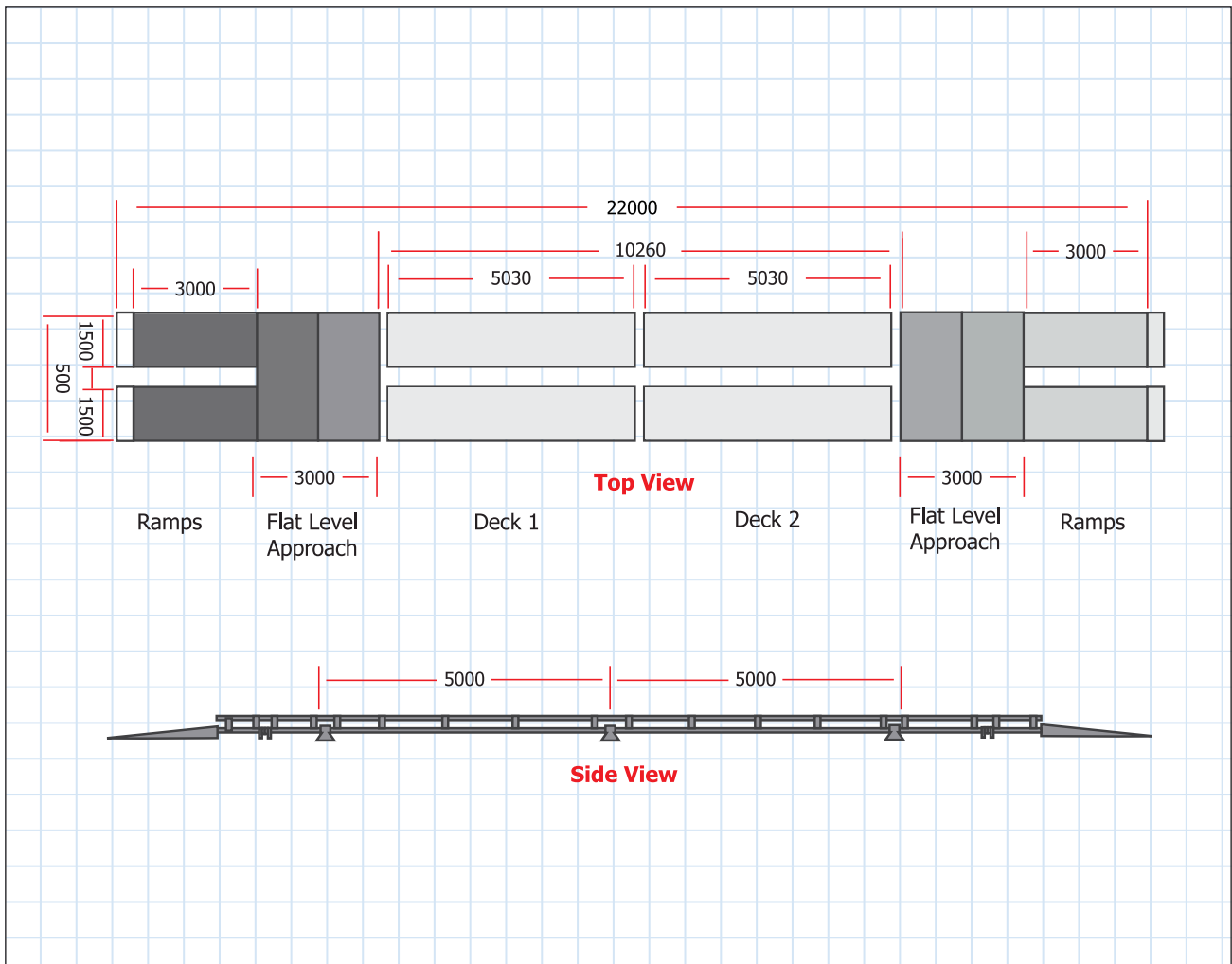
More software customisation options available. Talk to our consultants about your specific requirements so we can find the best software features to connect your weighbridge and business.

- Drivers & Operators can enter details of loads
- Take pictures of weighed vehicle
- Linked to a video camera - every vehicle weighed can be photographed for visual confirmation





■ **DIMENSIONS / NMI approved portable weighbridge**



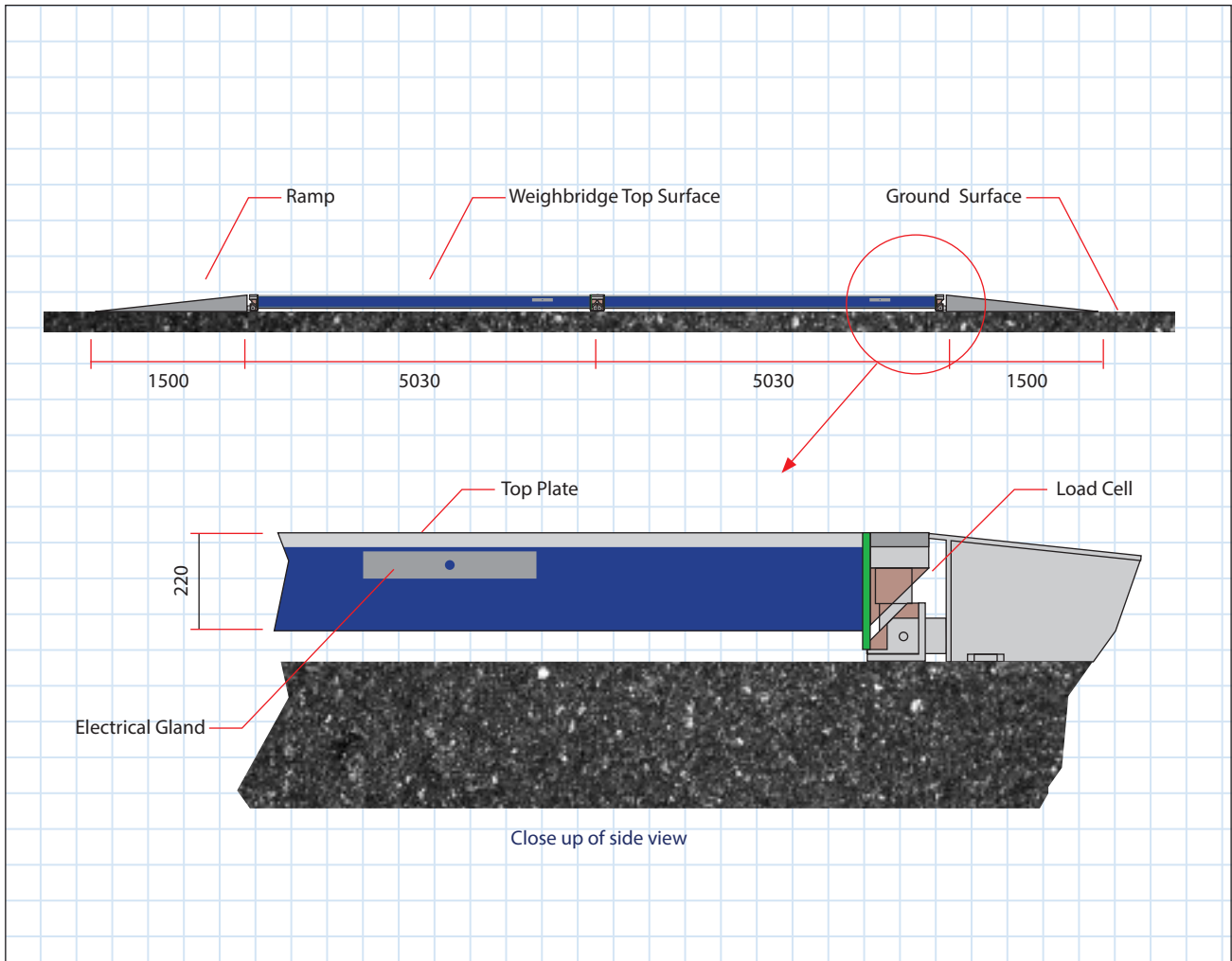
■ **SPECS**

Load cell	Titan-30T
Load cell Capacity	30 Tonnes (Per Load cell)
Overload Capacity	100%
Weather Compensation	-10°C to +50°C
Length Per Module	5000 mm
Width Per Module:	1500 mm
Weighbridge Accuracy:	20kg
Weighbridge Capacity	40 Tonnes per module (up to 10 Modules)
Ramps (4 as Standard Length)	3,000mm long 1,500mm wide



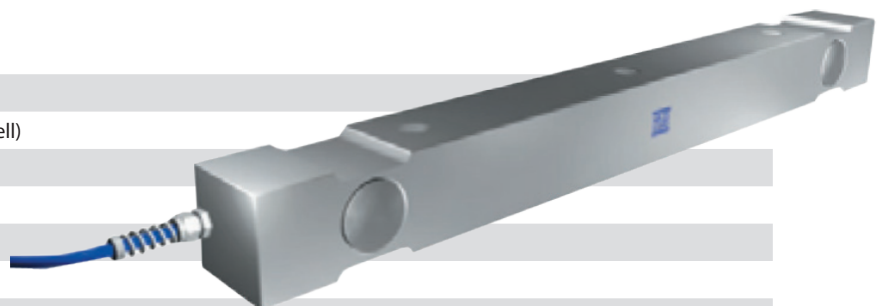


■ **DIMENSIONS / Non-trade approved portable weighbridge**



■ **SPECS**

Load Cell	AXLE-3-25T
Load Cell Capacity	25 Tonnes (Per Load cell)
Overload Capacity	100%
Weather Compensation	-10°C to +50°C
Length Per Module	5000 mm
Width Per Module:	1500 mm
Weighbridge Accuracy:	10kg
Weighbridge Capacity	40 Tonnes per module (up to 10 Modules)
Ramps (4 as Standard Length)	3,000mm long 1,500mm wide





■ **AWE - THE BEST IN THE BUSINESS**

AWE has built a reputation in providing world class products and services to customers from a wide range of industries for many unique applications. All the products come with AWE Quality Guarantee- giving you the assurance that they have been tested to meet or exceed the specifications and requirements of your application.

At AWE, it's more than just delivering perfectly-designed equipment, it also requires a team of dedicated people who will back you up with great service and support. Any servicing, installation and technical support issues you encounter can be addressed either onsite or remotely by our engineers and tradesmen who carry qualifications as:

- Licensed Tradesmen
- Mechanical Engineers
- Electrical Engineers
- Structural Engineers
- Draftsmen
- Fitter & Turners
- Boilermakers
- Fully Qualified Scale Makers
- Electronic Technicians
- Instrument Fitters
- Electricians
- Service Technicians
- Project Managers
- Formworkers
- Concreters



Call AWE today. We will find the right solution for your individual needs.

If you have questions about

- **weighing equipment**
- **packaging equipment**
- **bulk materials handling**
- **componentry**

call the sales team at *AWE Group* to find the right solution for your individual needs.

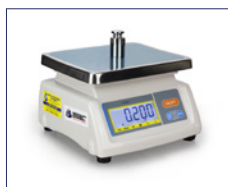
■ **AWE PRODUCT RANGE**



Weighbridges



Load Cells



Scales



Crane Scales



Indicators



Packaging Equipment



Onboard Weighing



Batching Consoles



Test Weight



Maintenance



■ WHO IS “AUSTRALIAN WEIGHING EQUIPMENT GROUP”

Jeff & Trevor Baillie started Australian Weighing Equipment (or AWE) in 1981, focusing on weighing solutions based on engineering principles. For nearly 40 years AWE has built its reputation as a leading supplier of robust weighing, packaging & bulk handling equipment. Our innovative engineering and continuous product developments have led to designs that will stand up to the rigours and demands of your applications.

AWE has increased its investment in manufacturing facilities with a new 3,200sq/m factory in Sydney which features;

- A CNC Machine Shop
- Heavy Metal Fabrication Shop
- Larger work areas for our team of qualified tradesman

Acquisitions of Bradwood Packaging and Dendy Packaging and Design Engineering has increased our packaging and engineering experience.

In 2008, AWE established a manufacturing facility in China - AWE Group Packaging and Bulk Materials Handling Equipment, a purpose-built 5,000sq/m factory in Suzhou China (70kms From Shanghai).

All of the products we offer are Australian designed and manufactured under our strict quality control system in our own factories both locally and internationally.

■ LOCATIONS OF AUSTRALIAN WEIGHING EQUIPMENT



Australian Weighing
Equipment - Sydney Office

8 Heald Road
Ingleburn, NSW 2565



Australian Weighing
Equipment - Melbourne Office

37 Barrie Road
Tullamarine, VIC 3043



Australian Weighing
Equipment - Brisbane Office

7 Darnick Street
Underwood, QLD 4119

■ AUSTRALIAN WEIGHING EQUIPMENT ON SOCIAL MEDIA



@AustralianWeighingEquipment



@australianweighingequipment



/company/awegrouppaustralia



www.youtube.com/AustWeighing



www.awe.com.au

Dealer's Information:

SCAN HERE



www.awe.com.au