



**AUSTRALIAN
WEIGHING
EQUIPMENT**
Way ahead in Weighing

PRODUCT GUIDE

ASP: AUTOMATIC SACK PLACER



- Fill bags faster
- Cut down on labour costs
- 12 bags p/minute - 720 bags p/hour



■ ABOUT THE AUTOMATIC SACK PLACER

AWE's Automatic Sack Placer ASP Series can reduce or eliminate the need to manually perform repetitive tasks of filling bags. The Sack Placer takes the bag from a magazine of bags, then via a vacuum and mechanical movement system, opens the bag and places it under the filling spout.

Filling your bags becomes a fast and reliable operation. The ASP Automatic Sack Placer has the Lowest 'Cost of Ownership' in its class because it will reduce time and labour to fill valve bags. It is capable of handling paper, plastic, WPP and laminated sacks.

It is also possible to combine with further AWE Packaging products and to create a complete filling, sealing to palletising line.

- Loads and unloads 12 sacks per minute, 720 sacks per hour
- Compatible sacks: Paper, plastic, woven polypropylene & laminated
- Maximum bag size 600mm x 1,000mm
- Minimum bag size 200mm x 350mm
- Can fit other bag sizes if needed
- Bags are loaded manually into magazine conveyor in 100mm piles
- Loads bags using a vacuum & pneumatic components
- Upgradeable to fully automated bagging system
- Can be integrated with automatic bag formers, neck stretchers, feed systems, conveyors & palletisers
- Dust protection for sensitive components such as electronic control system & pneumatic parts
- Touch screen controls

Loads and unloads
**12 sacks
p/minute,
720 sacks
p/hour**

■ OUR CLIENTS





Automatic Sack Placer

■ FEATURES & BENEFITS

- ASP Automatic Sack Placer is designed to work with your existing or new production line
- High throughput achieved because it ensures rapid, stable, transfer from bag magazine to bag clamp
- Easy clean out and changeover of different sizes bags
- Manufactured to comply above and beyond Australian standards
- Universal and industrial components give the machinery extra long life cycles and parts being readily available from multiple suppliers. The way machinery should be built.
- You don't have to worry about dusty environments because your pneumatic and electrical control equipment are protected in positive pressure housing
- The Control System is based on the latest the PLC technology, linked to touch screen HMI controls
- Quick and easy commissioning due to single piece shipping and factory pre-testing. Just uncrate plug and connect it air and power and your ready to go
- Operator friendly easy set and forget controls, control panel allows operator to test all functions on the Sack Placer, which also allows for diagnosis and easy trouble shooting
- This automatic bag placer can be upgraded to a fully automated bagging systems. Our equipment can integrate with automatic bag formers, neck stretchers, feed systems, conveyors, and further automation

Reduce or eliminate the need to manually perform **repetitive tasks** of filling bags



Bag filling in progress



■ **CUSTOMISE THE ASP TO SUIT YOUR APPLICATION**

- Can be fitted with a single-pile sack tray or multi-pile sack magazine
- Upgrade to stainless steel or food standard quality
- Can be fitted with mobile base frames
- Save time by adding printing & applying labeller
- Remote diagnostics via modem
- Sack tail separator for problem sacks
- Modify ASP sack placer for sacks with handles

Can be integrated with weighers and fillers

Weigher Requirements:

ASP Sack Placer can be integrated with any Nett weigher, Gross Weigher or Volumetric Fillers, regardless of make and model.

Required Electrical

Requires 240V, and operates on 50Hz. It only needs Single Phase and a 6 Amp Supply.

Required Air Pressure

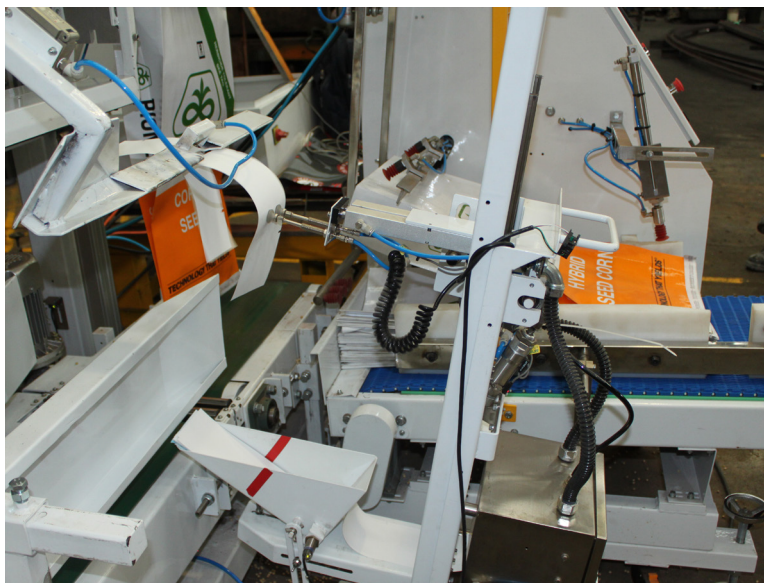
Requires clean, cool dry air supplied at 90 PSI (6 bar) at 27 Litres (1 CuFt) per cycle.



Touchscreen display



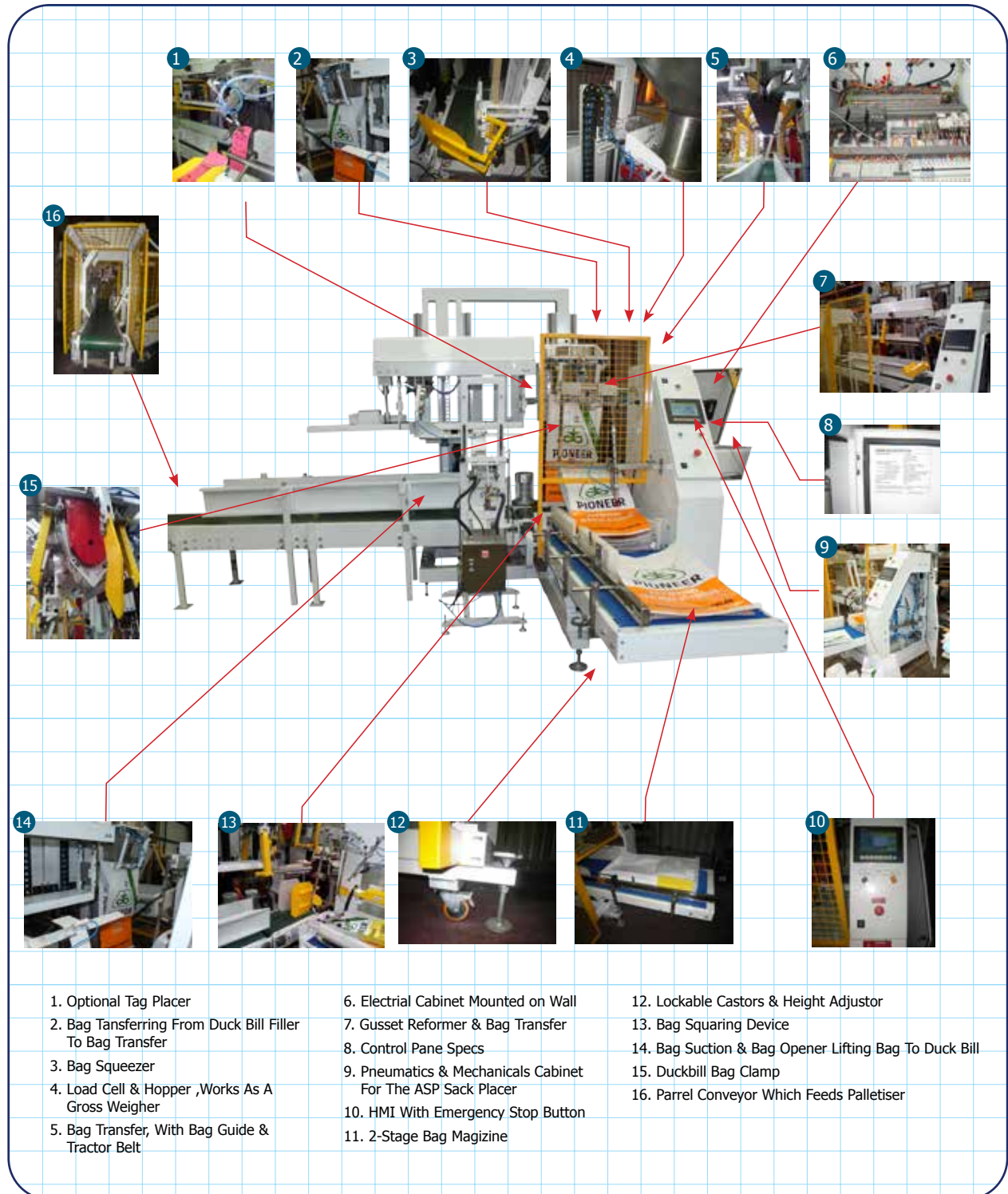
Caster wheels for mobility (Optional)



Tag Placer Sideview (Optional)



■ **COMPONENTS**



1. Optional Tag Placer

2. Bag Transferring From Duck Bill Filler To Bag Transfer

3. Bag Squeezer

4. Load Cell & Hopper ,Works As A Gross Weigher

5. Bag Transfer, With Bag Guide & Tractor Belt

6. Electrical Cabinet Mounted on Wall

7. Gusset Reformer & Bag Transfer

8. Control Pane Specs

9. Pneumatics & Mechanicals Cabinet For The ASP Sack Placer

10. HMI With Emergency Stop Button

11. 2-Stage Bag Magazine

12. Lockable Castors & Height Adjustor

13. Bag Squaring Device

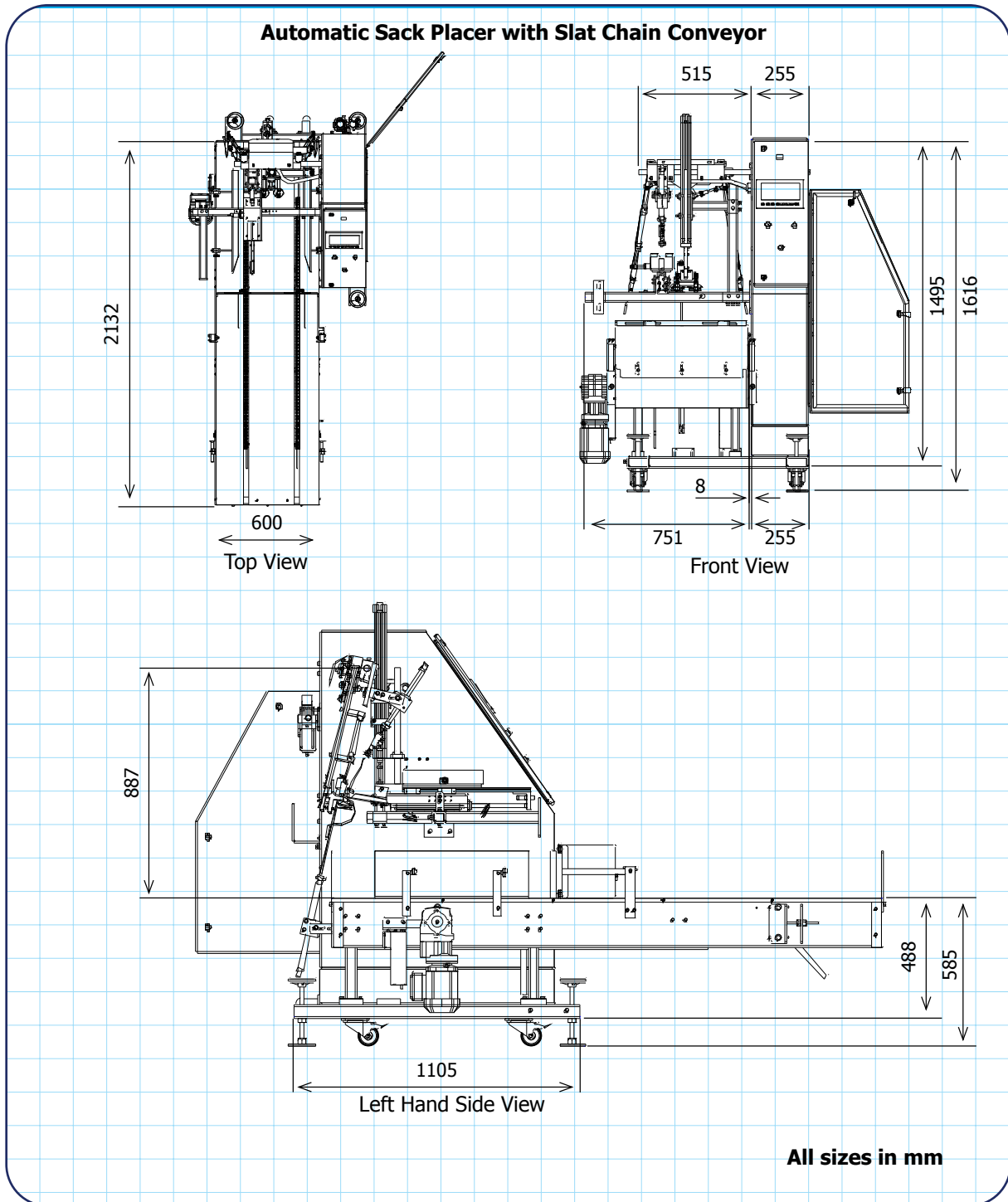
14. Bag Suction & Bag Opener Lifting Bag To Duck Bill

15. Duckbill Bag Clamp

16. Parallel Conveyor Which Feeds Palletiser

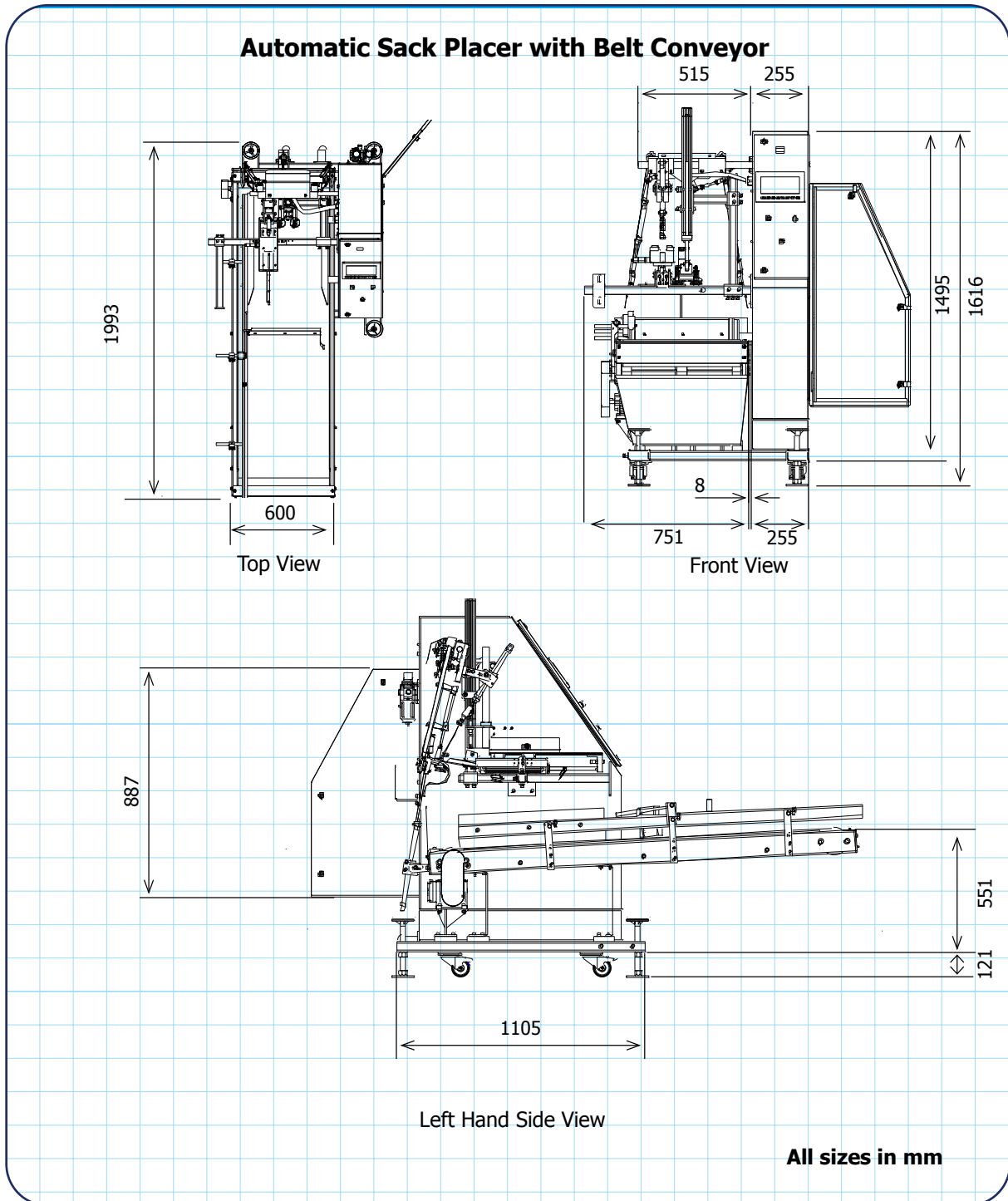


■ **DIMENSIONS**





■ **DIMENSIONS**

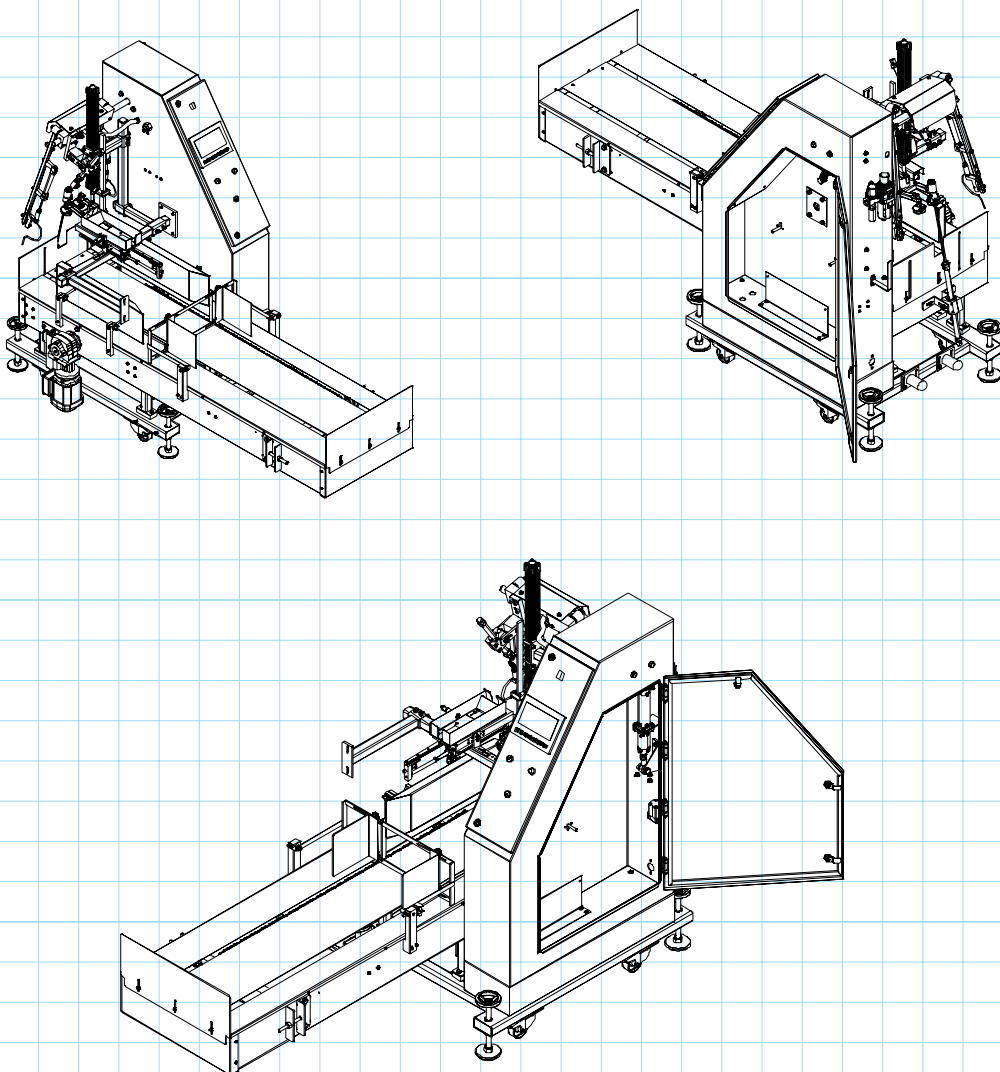




■ **DIMENSIONS**

Automatic Sack Placer with Slat Chain Conveyor

3 Dimensional Views From Various Angles

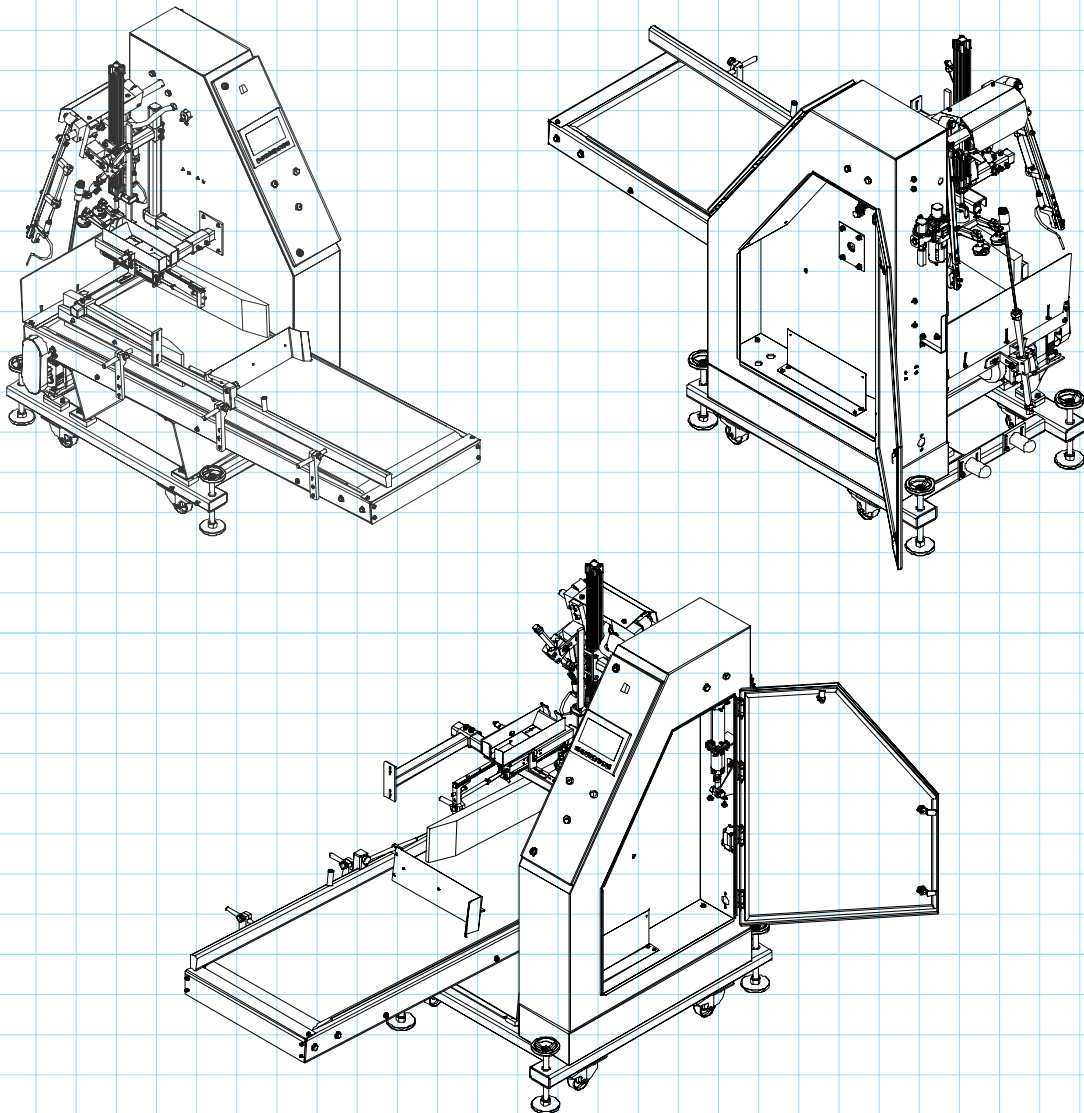




■ **DIMENSIONS**

Automatic Sack Placer with Belt Conveyor

3 Dimensional Views From Various Angles





■ **AUTOMATIC SACK PLACER SPECS**



Minimum Bag Size	200mm x 350mm
Maximum Bag Size	600mm x 1,000mm
Bag Speed	Up to 12 Paper plastic or Woven Polypropylene Sacks every minute, 720 times an hour.
Installed Power	2 kW
Electrical	415V 50hz 3 phase 6 Amp Single Phase on request
Air Consumption	90 PSI (6 bar) at 27 Litres (1 Cubic Foot) per cycle
PLC	Mitsubishi or Panasonic
HMI	Delta
Motors	SEW
Reduction Gears	SEW
Pneumatic Components	SMC
Protection Rating	IP55
Vacuum Pump	Busch
Electrical Components	Schneider
Weight	210 kg
Size	1905mm (L) x 1559mm (H) x 970mm (W)



■ **QUESTIONNAIRE**

DATA REQUEST

Quotation due date _____ Estimated installation date _____

Project for: (Name) _____

(Address) _____ Funds approved: Yes No

(City) _____ Quarter: _____

(Plant location) _____

Contact: (Name) _____

(Title) _____

(Telephone) _____

Equipment discussed: _____

Copy of proposal to:

Customer _____

Customer _____

Salesman _____

Others _____

Attachments: Supplement

Bag sample

Pallet Data

Product sample

Sketch / Drawing

Hazard sheet



Product Details: One (1) sample & product hazard sheet to be forwarded on (date) _____

A	Name:			
B	Description:			
C	Particle Size (Mesh):			
D	Density:			
E	Pack Temperature:			
F	Flash Point:			
G	Melting Point:			
H	Angle of Repose:			
I	Bridging Characteristics:			
J	Corrosive:			
K	Abrasive:			
L	Hygroscopic:			
M	Explosive:			
N	Flammable:			
O	Toxic:			
P	Poisonous:			
Q	Cost:			
R	Other:			

Filling Bag Details: Empty samples will be forwarded (date) _____

		Empty	Filled	Empty	Filled	Empty	Filled
A	Bag Face Width:						
B	Bag Gusset Width/Thickness:						
C	Bag Length:						
D	Top & Bottom Width:						
E	Bag Type (O.M., Valve):						
F	Valve Size (inside):						
G	Valve Location:						
H	Valve Sleeve Type:						
I	Valve Sleeve Dimensions*:						
J	Bag Construction:						
K	Rigid Container Diameter/Width:						
L	Rigid Container Length:						
M	Rigid Container Height:						
N	Rigid Container Tare Wt:						
O	Net Bag/Container Filled Wt:						

* Length from outside edge of bag to inside edge of sleeve insert.

O.M.= Open Mouth

Valve= Valve Bag



Performance Requirements:

A DUTY: Hours/Day _____ Days/Week _____ Weeks/Year _____

B Kg per Hour:

--	--	--

C Bags/Containers per minute:

--	--	--

D Accuracy at 2 Sigma:

--	--	--

E % of Production:

--	--	--

F Operating Environment: Wet _____ Dusty _____ Dry _____ Clean _____

G Operating Temp (Min/Max): Per Day _____ Per Day _____ Humidity _____

H Surge Hopper Cap:

--	--	--

I Headroom:

--	--	--

J Automation of Bag Placement: Manual Automatic

K Please advise of room availability. Add hand sketches or photos.

Utilities:

A Power Voltage: _____ Ph. _____ Hz. _____

B Control Voltage: _____ Ph. _____ Hz. _____

C Classification controls: Dust tight _____ Water tight _____

Explosion proof: Class _____ Group _____ Div. _____ Other _____

D Motors: Exp. proof _____ Chem. duty _____ Hi eff. _____ Other _____

E Compressed air: PSI _____ Volume CFM _____ Pressure _____

Materials of Construction:

F Platework type: _____ Product contact only _____ All other (specify) _____

G Paint: powder coated _____ other (submit specs) _____

Equipment Details: (Describe components & provide sketch of layout including critical dimensions & obstacles)

A _____

B by AWE Group by Others

C Controls Description: _____

D Additional info & comments: _____



■ **AWE - THE BEST IN THE BUSINESS**

AWE has built a reputation in providing world class products and services to customers from a wide range of industries for many unique applications. All the products come with AWE Quality Guarantee- giving you the assurance that they have been tested to meet or exceed the specifications and requirements of your application.

At AWE, it's more than just delivering perfectly-designed equipment, it also requires a team of dedicated people who will back you up with great service and support. Any servicing, installation and technical support issues you encounter can be addressed either onsite or remotely by our engineers and tradesmen who carry qualifications as:

- Licensed Tradesmen
- Mechanical Engineers
- Electrical Engineers
- Structural Engineers
- Draftsmen
- Fitter & Turners
- Boilermakers
- Fully Qualified Scale Makers
- Electronic Technicians
- Instrument Fitters
- Electricians
- Service Technicians
- Project Managers
- Formworkers
- Concreters



Call AWE today. We will find the right solution for your individual needs.

If you have questions about

- **weighing equipment**
- **packaging equipment**
- **bulk materials handling**
- **componentry**

call the sales team at *AWE Group* to find the right solution for your individual needs.

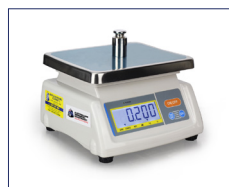
■ **AWE PRODUCT RANGE**



Weighbridges



Load Cells



Scales



Crane Scales



Indicators



Packaging Equipment



Onboard Weighing



Batching Consoles



Test Weight



Maintenance



■ **WHO IS “AUSTRALIAN WEIGHING EQUIPMENT GROUP”**

Jeff & Trevor Baillie started Australian Weighing Equipment (or AWE) in 1981, focusing on weighing solutions based on engineering principles. For nearly 40 years AWE has built its reputation as a leading supplier of robust weighing, packaging & bulk handling equipment. Our innovative engineering and continuous product developments have led to designs that will stand up to the rigours and demands of your applications.

AWE has increased its investment in manufacturing facilities with a new 3,200sq/m factory in Sydney which features;

- A CNC Machine Shop
- Heavy Metal Fabrication Shop
- Larger work areas for our team of qualified tradesman

Acquisitions of Bradwood Packaging and Dendy Packaging and Design Engineering has increased our packaging and engineering experience.

In 2008, AWE established a manufacturing facility in China - AWE Group Packaging and Bulk Materials Handling Equipment, a purpose-built 5,000sq/m factory in Suzhou China (70kms From Shanghai).

All of the products we offer are Australian designed and manufactured under our strict quality control system in our own factories both locally and internationally.

■ **LOCATIONS OF AUSTRALIAN WEIGHING EQUIPMENT**



Australian Weighing
Equipment - Sydney Office

8 Heald Road
Ingleburn NSW 2565



Australian Weighing
Equipment - Melbourne Office

37 Barrie Road
Tullamarine, VIC, 3043



Australian Weighing
Equipment - Brisbane Office

7 Darnick Street
Underwood, QLD 4119

■ **AUSTRALIAN WEIGHING EQUIPMENT ON SOCIAL MEDIA**



@AustralianWeighingEquipment



@australianweighingequipment



/company/awegrouppaustralia



www.youtube.com/AustWeighing



www.awe.com.au

Dealer's Information:

SCAN HERE



www.awe.com.au