



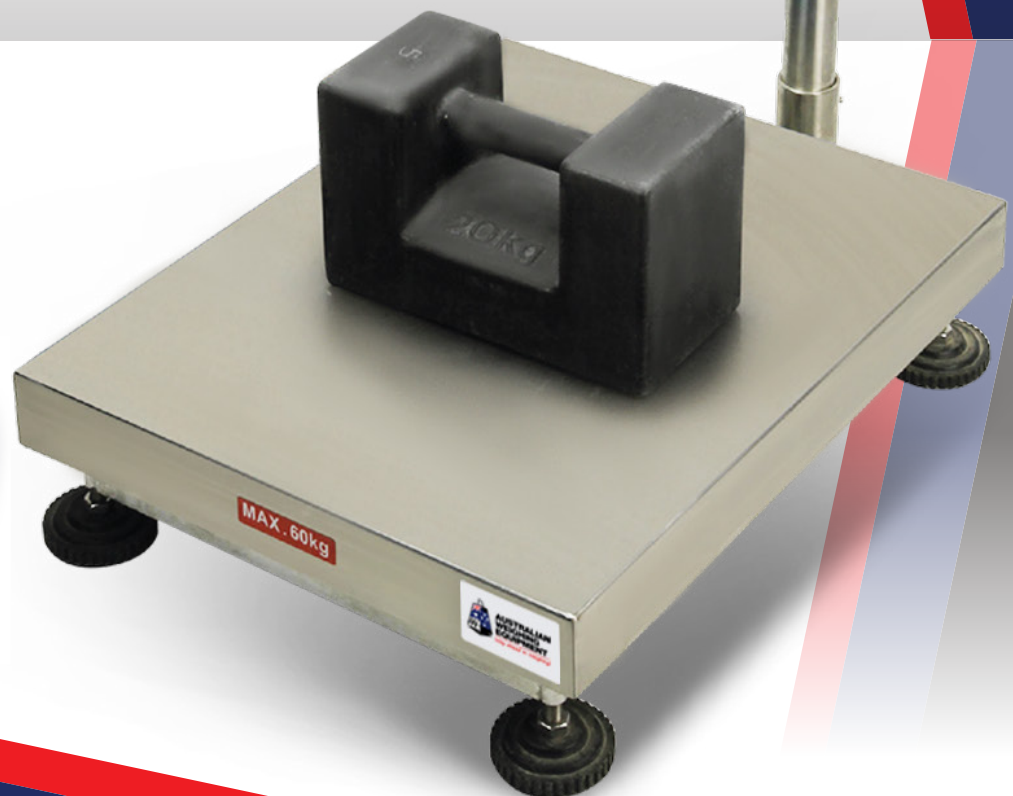
**AUSTRALIAN  
WEIGHING  
EQUIPMENT**

*Way ahead in Weighing*

PRODUCT GUIDE

# CWS LONGNECK

- Trade approved NMI 6/9/307
- Water resistant IP65 rating
- Rugged industrial design





■ **FEATURES**

- 60kg and 150kg capacity scales available
- Trade Approved - 3000 Division. NMI 6/9C/307
- IP65 Waterproof rating
- Single or Dual Range Capability
- High Internal Resolution - 1/600,000
- Accidental Overloading Protection
- Up to Maximum 40 Hours Use on Battery Operation
- Power Supply Options:

Mains - AC adapter (12V/500mA)

Rechargeable Battery - NI-MH (1.2V/2000Ah x 6)

- Grade 304 Stainless Steel Construction



▶ Mercury Level Bubble at base of pole, so its quick & simple to adjust the levels

▶ Shock absorbing pads to protect load cell and frame from harsh impact



▶ High quality, IP68 hermetically sealed load cell

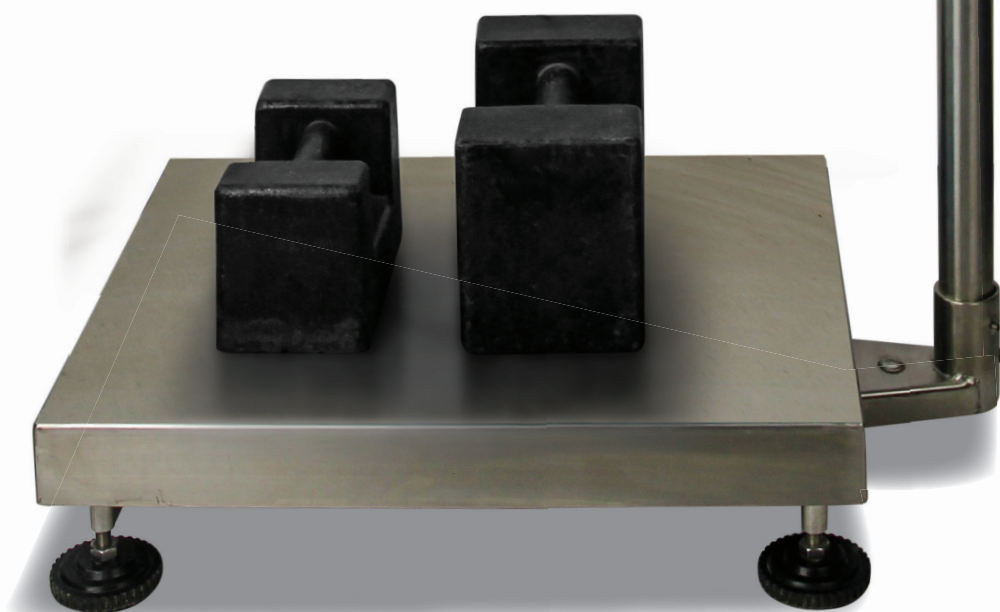




■ **FEATURES**



- Keyboard – Seven simple to use, large tactile keys with multi-functional use
- Display – 52mm Digit LCD Display with white backlight
- Functions – Stable, Zero, Gross, Net, Tare, Hold, Low Battery and Auto Power off
- Housing – IP65 Stainless Steel with Tilting head
- Weighing Units - Kilo (kg) Gram (g), Pieces (pcs), Percent (%)



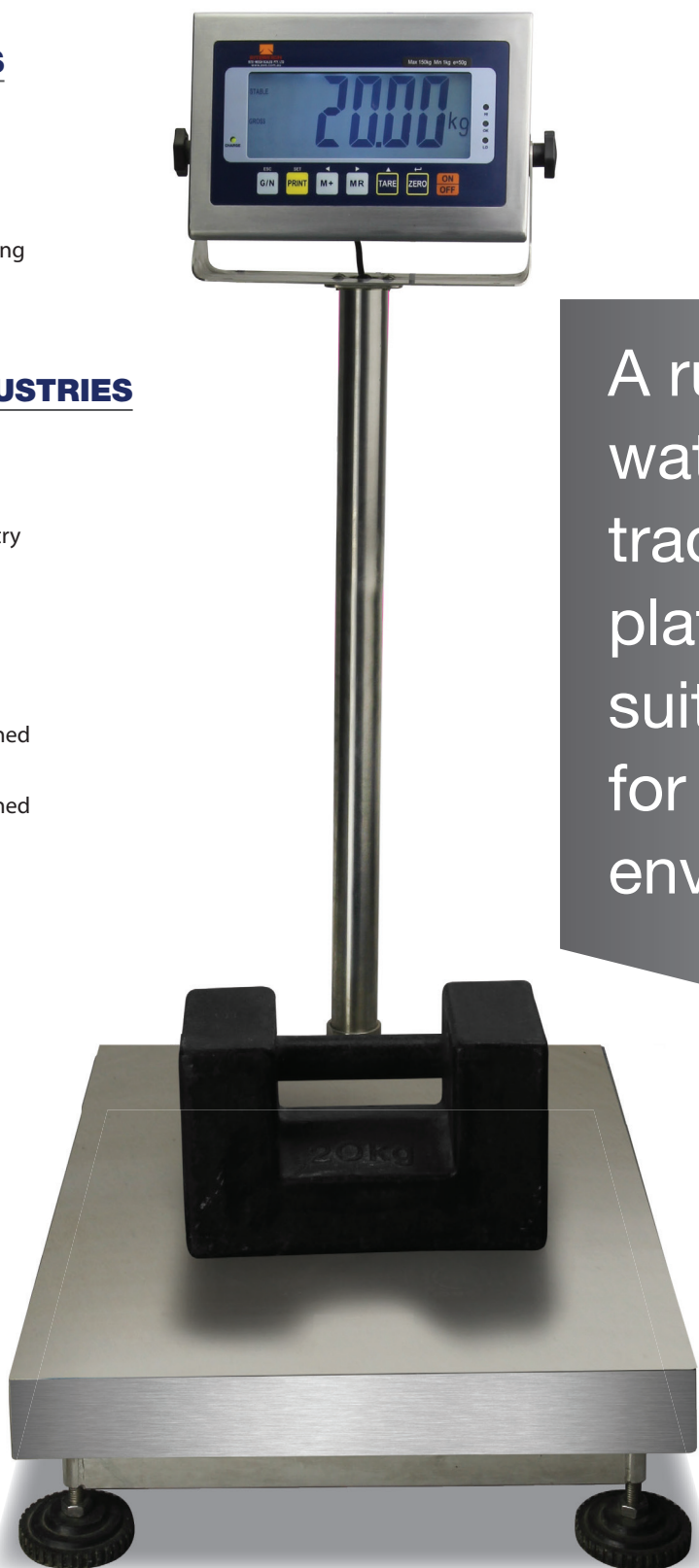


### ■ APPLICATIONS

- Weighing
- Catchweighing
- Basic counting
- Percentage and totalising

### ■ SUITABLE INDUSTRIES

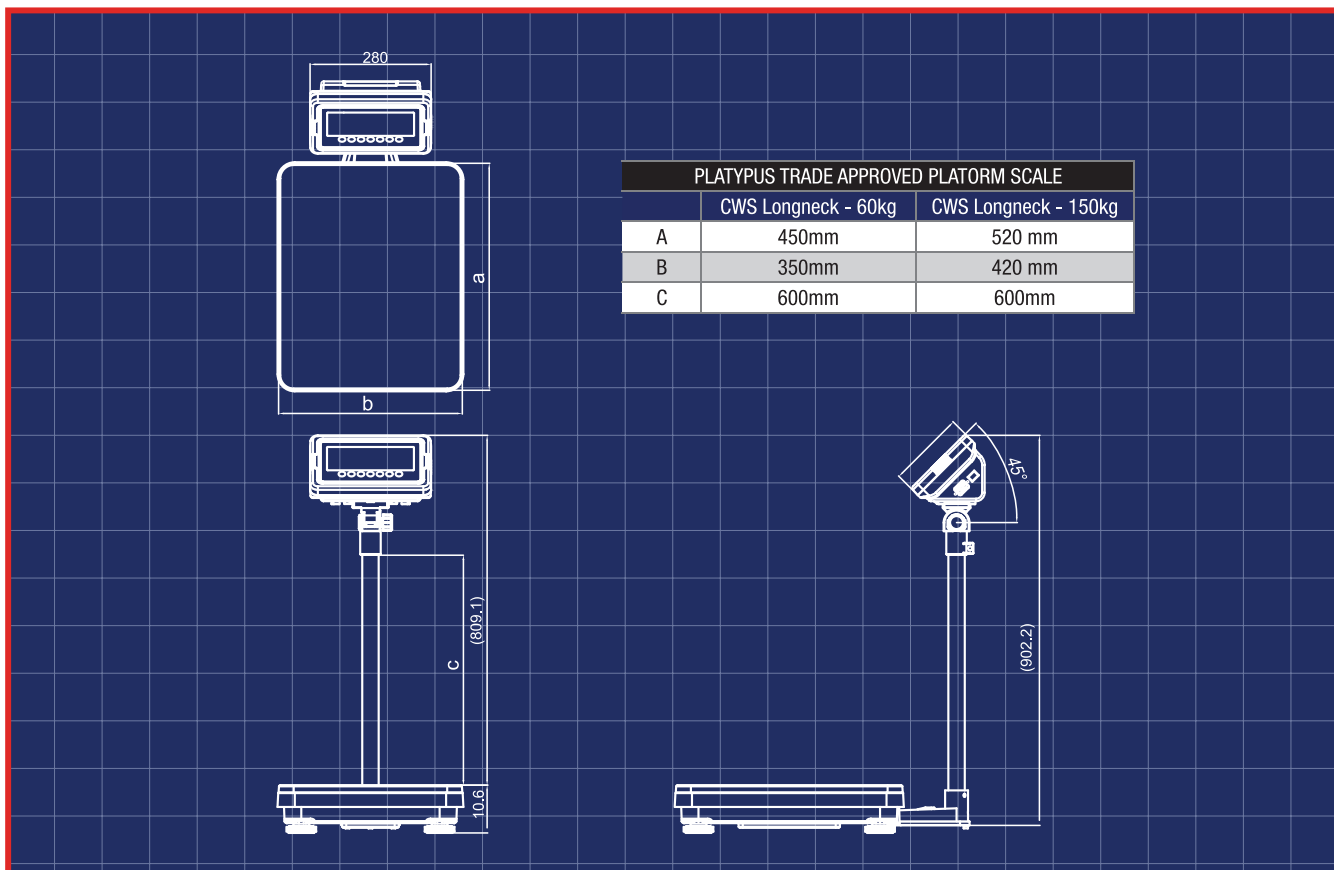
- Warehouses
- Shipping and handling
- Food processing industry
- Animal weighing
- Pharmaceutical
- Chemical
- Any production where raw materials are weighed
- Any production where raw materials are weighed



A ruggedly built,  
waterproof,  
trade appoved  
platform scale  
suitable  
for harsh  
environments



■ **DIMENSIONS**



■ **SPECS**

MODEL	CWS LONGNECK-60kg	CWS LONGNECK-150kg
Maximum Capacity (Max)	60kg	150kg
Minimum Capacity (Min)	0.4kg	1kg
Scale Interval	0.02kg	0.05kg
Number of Scale Intervals	3000	
Resolution	40g	50g
Max Division	6.000e	3.000e
ADC Update	≤1/10 second	
Temperature Range	-10°C to +40°C	
Platform Size	420mm x 520mm	
Load Cell	1 x Single Point - ZEMIC model L6G	
E <sub>max</sub>	100kg	200kg
Minimum value of verification scale interval for basework (V <sub>min</sub> of load cell)	0.02kg	0.05kg
Load Cell Sensitivity (at E <sub>max</sub> )	2 mV/V	
Input Impedance	406	
Excitation Voltage (Max)	18 Volt	

MODEL	CWS LONGNECK-60KG	CWS LONGNECK-150KG
Gross Weight	21kg	21kg
Display	22mm digit LCD display, with white LED backlight	
Keyboard	7 keys (Mechanical switch)	
Housing	Stainless Steel	
IP Rating	IP65	
Power	AC adapter (12V/500mA), Rechargeable Battery (1.2V/2000Ah x 6)	
Cable Length	1600mm	
Number of Leads	6 wires + shield	
Approvals	NMI 6/9C/307, CE, OIML	

■ **OPTIONS**

ORDER CODE	DESCRIPTION
PS-101	Spare Power Packs for Recharging 12v500mA
BWP-XXXkg	Platypus Base Works Only
PSWB	Platypus Wall Bracket
TBC	Platypus Series R232 Serial Output
TBC	Verification for trade Use - 60, 150Kg models

Brochure: 150920  
Version: 140820



■ **AWE - THE BEST IN THE BUSINESS**

AWE has built a reputation in providing world class products and services to customers from a wide range of industries for many unique applications. All the products come with AWE Quality Guarantee- giving you the assurance that they have been tested to meet or exceed the specifications and requirements of your application. At AWE, it's more than just delivering perfectly-designed equipment, it also requires a team of dedicated people who will back you up with great service and support. Any servicing, installation and technical support issues you encounter can be addressed either onsite or remotely by our engineers and tradesmen who carry qualifications as:

- Licensed Tradesmen
- Mechanical Engineers
- Electrical Engineers
- Structural Engineers
- Draftsmen
- Fitter & Turners
- Boilermakers
- Fully Qualified Scale Makers
- Electronic Technicians
- Instrument Fitters
- Electricians
- Service Technicians
- Project Managers
- Formworkers
- Concreters

Call AWE today.



If you have questions about

- **weighing equipment**
- **packaging equipment**
- **bulk materials handling**
- **componentry**

call the sales team at *AWE Group* to find the right solution for your individual needs.

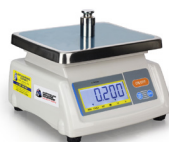
■ **AWE PRODUCT RANGE**



Weighbridges



Load Cells



Scales



Crane Scales



Indicators



Packaging Equipment



Onboard Weighing



Batching Consoles



Test Weight



Maintenance



## ■ WHO IS “AUSTRALIAN WEIGHING EQUIPMENT GROUP”

Jeff & Trevor Baillie started Australian Weighing Equipment (or AWE) in 1981, focusing on weighing solutions based on engineering principles. For nearly 40 years AWE has built its reputation as a leading supplier of robust weighing, packaging & bulk handling equipment. Our innovative engineering and continuous product developments have led to designs that will stand up to the rigours and demands of your applications.

AWE has increased its investment in manufacturing facilities with a new 3,200sq/m factory in Sydney which has

- A CNC Machine Shop
- Heavy Metal Fabrication Shop
- Larger work areas for our team of qualified tradesman

Acquisitions of Bradwood Packaging and Dendy Packaging and Design Engineering has increased our packaging and engineering experience.

In 2008, AWE established a manufacturing facility in China - AWE Group Packaging and Bulk Materials Handling Equipment, a purpose-built 5,000sq/m factory in Suzhou China (70kms From Shanghai).

All of the products we offer are Australian designed and manufactured under our strict quality control system in our own factories both locally and internationally.

## ■ LOCATIONS OF AUSTRALIAN WEIGHING EQUIPMENT



Australian Weighing  
Equipment - Sydney Office

8 Heald Road  
Ingleburn NSW 2565



Australian Weighing  
Equipment - Melbourne Office

37 Barrie Road  
Tullamarine, VIC, 3043



Australian Weighing  
Equipment - Brisbane Office

7 Darnick Street  
Underwood, QLD1 4119

## ■ AUSTRALIAN WEIGHING EQUIPMENT ON SOCIAL MEDIA



@AustralianWeighingEquipment



@australianweighingequipment



/company/awegrouppaustralia



www.youtube.com/AustWeighing



www.awe.com.au

Dealer's Information:

SCAN HERE



www.awe.com.au

Brochure: 150920  
Version: 140820