



**AUSTRALIAN
WEIGHING
EQUIPMENT**
Way ahead in Weighing

PRODUCT GUIDE

PINCH BAG CLOSER

- For sealing stepped end bags and inner liners
- Increase efficiency in your production processes





Pinch Bag Closer

■ ABOUT THE PINCH BAG CLOSER

AWE's PBC Pinch Bag Closer is suited for sealing stepped end bags which have a pre-applied, hot melt adhesive strip positioned along the top flap of the bag. The PBC can reduce or eliminate the need to manually perform repetitive tasks of hermetically sealing the plastic inner liner, sealing the stepped end (top flap). It uses HEAT and PRESSURE to seal and close your bags, performing 2 primary functions:

- Seals the inner plastic liner within a multiwall bag.
- Close reactivates (melt) pre-applied hot melt adhesive on the stepped top edge of the bag and then folds this over to form a closure.

The heat, pressure and time are electronically controlled from the HMI Screen.

1. The bag slides along on either gravity rollers or conveyors and the top of the bag is positioned centrally in the PBC.
2. Once the foot switch or push button is engaged the PBC controls take over. The bag faces are flattened together and heat from the seal bar is applied to the bag. Cooling occurs and a hermetic seal is formed for inner liner.
3. Once the top edge of the bag hits the bag stop plate, a fold line is formed which is incorporated into the sealing bar. The folding plate rotates to 80° folding the top 40-50mm of the bag with a parallel fold.
4. Finally, the folding plate rotates back applying pressure to the molten adhesive and then cools, bonding with the paper, creating a siftproof bag. The Hot melt adhesive bonds to the paper to produce high-integrity barrier seals, eliminating the need for costly over-wraps.

This results in a hermetically sealed bag and is commonly used in food products, toxic products or products that are hygroscopic. Widely used to package fine powder products, milk powders, premium pet foods, premix food products, animal feeds, chemical and hazardous products.



Reduce or eliminate the need to manually perform repetitive bag sealing tasks



PBC Closing Bags
(Covers Removed For Demo)



Folding Bag Flap
(Covers Removed For Demo)



A Sealed Siftproof Bag



■ FEATURES & BENEFITS

- Easy clean out and changeover for different sized bags.
- Suited for agricultural applications, building materials/aggregates, chemicals, food, minerals, pet/animal food & pharmaceutical, industries, day in and day out.
- Universal and industrial components give the machinery extra long life cycles and parts being readily available from multiple suppliers. The way machinery should be built.
- Manufactured to comply above and beyond Australian Standards.
- You don't have to worry about dusty environments because your pneumatic and electrical control equipment are protected in positive pressure housing.

Shipped pretested with seal temperatures suited for most 2 and 3 ply bags.

- The Control System is based on the latest the PLC technology, linked to touch screen HMI.
- Operator friendly easy set and forget controls. The control panel allows operator to test all functions on the Pinch Bag Closer, which also allows for diagnosis and easy trouble shooting.
- Quick and easy commissioning due to single piece shipping and factory pretesting. The PBC is shipped pretested with seal temperatures and times that will suit MOST 2 ply and 3 ply bags.
- Just uncrate, plug, connect air and power supply, and you're ready to go.
- PBC is fully adjustable allowing for various bag sizes, conveyors and heights.
- This PBC can be upgraded to link to further automated bagging systems. Our modular design adapts to the changing needs of your bulk packaging by integrating with automatic bag formers, neck stretchers, feed systems, conveyors, and further automation.
- 620mm folder section for smooth, wrinkle-free folds.
- Height Adjustable Floor Stand allows bag length variance by 200mm (standard).
- Stainless Steel provides Corrosion Resistant Construction, suitable for food standard quality.
- Breakaway feature for easy service (No Tools Required).
- PBC series Pinch Bag Closer is designed to work with your new or existing production line.



Height Adjustment
& Foot Switch



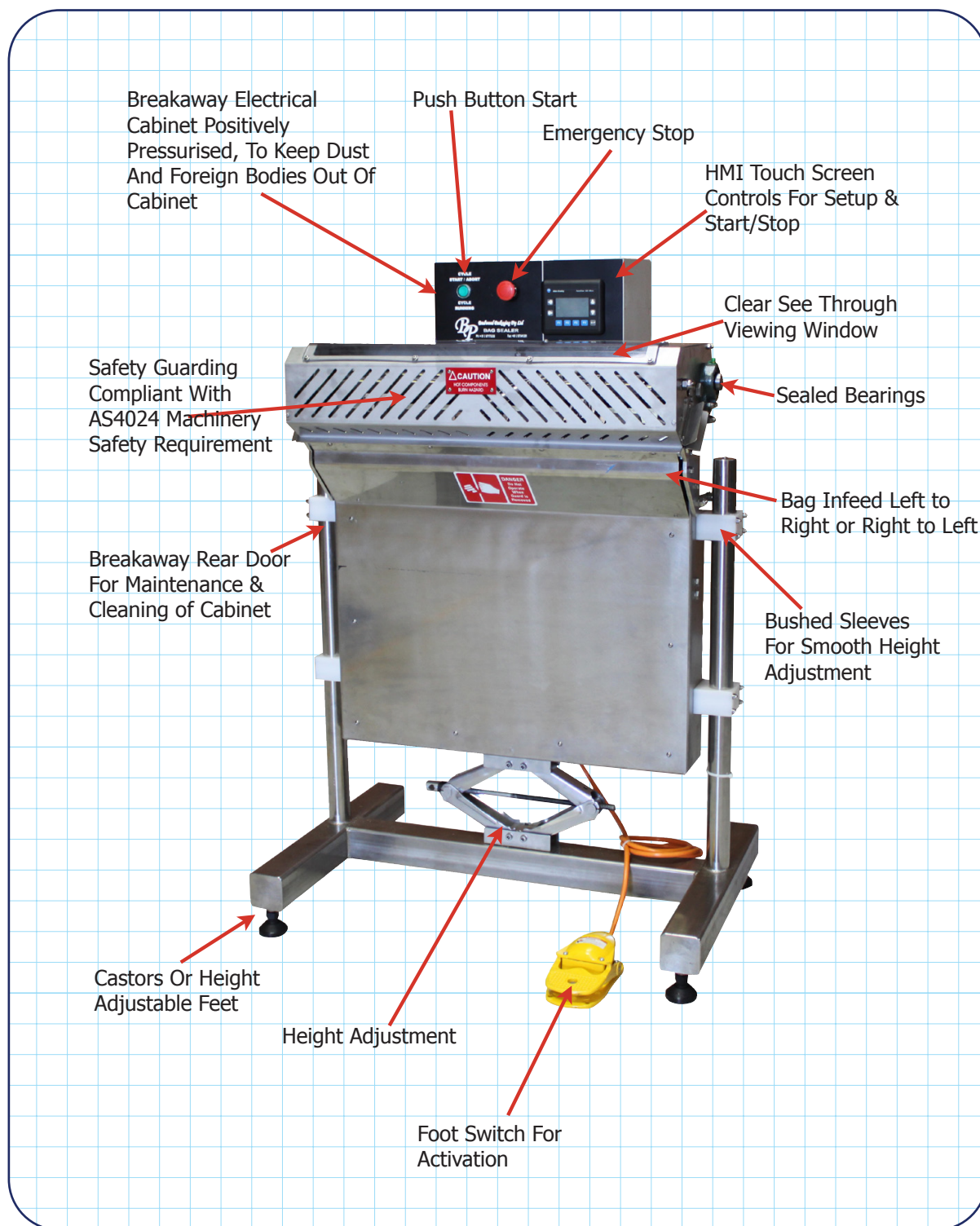
HMI control



Sideview of The Pinch Bag Closer



■ **COMPONENTS OF THE PINCH BAG CLOSER**





■ BAG DESIGNS SUITED FOR THE PBC

If you're using a Pinch Bag Closer & Sealing System, the sack quality will have a direct influence on your overall productivity. Using cheap inferior sacks will cause inconsistent results.

- PBC Pinch Bag Closer is designed to handle stepped end bags up to an overall width of 620mm.
- The PBC can take bags of various lengths and has 200mm height adjustable legs. The critical factor in bag length is making sure it is long enough to fit the contents with enough head space (recommended 100mm).

Suitable for bags of various lengths and has 200mm height adjustable legs

You should expect your Pinch Bag Closer to process up to 3, 2 Ply paper bags per minute. The sealing speed is subject to many variations such as conveyor speed, operators speed and experience, thickness of ply of bag and types of glue.

The Pinch Bag Closer is designed to seal and close stepped end bags. These bags may be either flat tube, gusseted, with block or pinch type bottoms.

A pinch bag is a multi-wall paper bag, open mouth, stepped end and pre-glued. With these bags, the glue is pre-applied during the production of the bag itself and then reactivated after filling, by heat during the closing process. Pinch bags provide sift-proof integrity.

The sift-proof systems prevent the product escaping, while protecting the product against contamination from foreign particles, insects or moisture.

If your using unlined bags, the sealing function on the PBC is not required and the machine only closes the bag. ('Close only' as a setting in the HMI Screen)

These stepped-end flaps bags usually have fold over between 40mm and 50mm, differing slightly between bag manufacturers. The bag manufacturer can advise the ideal fold over dimension for your bag.

The type of liner can also be varied to suit the application. Typical liners are single layer polyethylene, however multi-layer co-extruded films, barrier film, and polyethylene that seal through contamination better are also available.



Sealing Process
(Covers removed for Demonstration)



Sealing Process
(Covers removed for Demonstration)



A Multi-wall Paper Bag, Open Mouth, Stepped End & Pre-glued With A Polyethylene Liner



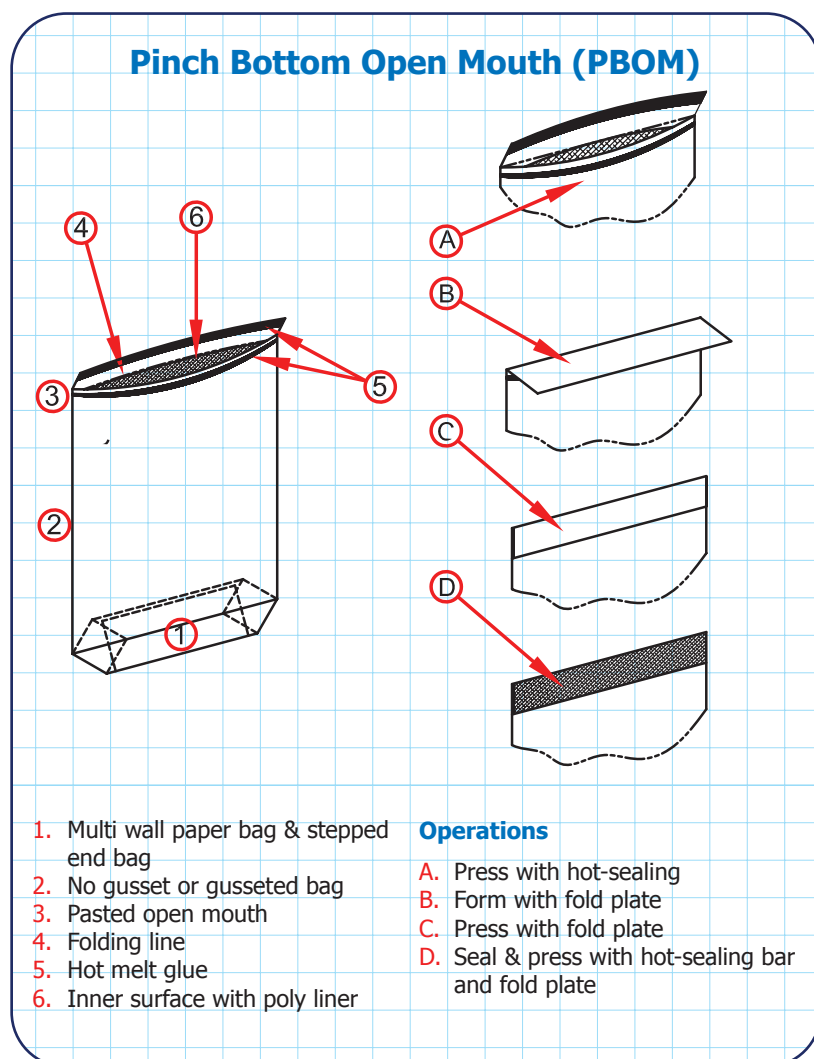
■ WHAT BAGS CAN BE USED IN THE PINCH BAG CLOSER?

Your bag suppliers are experts at designing the correct bag for your application. Before beginning production, QUALITY CONTROL checks on actual bags to be used should be done, with both empty and full bags.

The PBC can seal all types of liner material successfully by adjustment of heat and time.

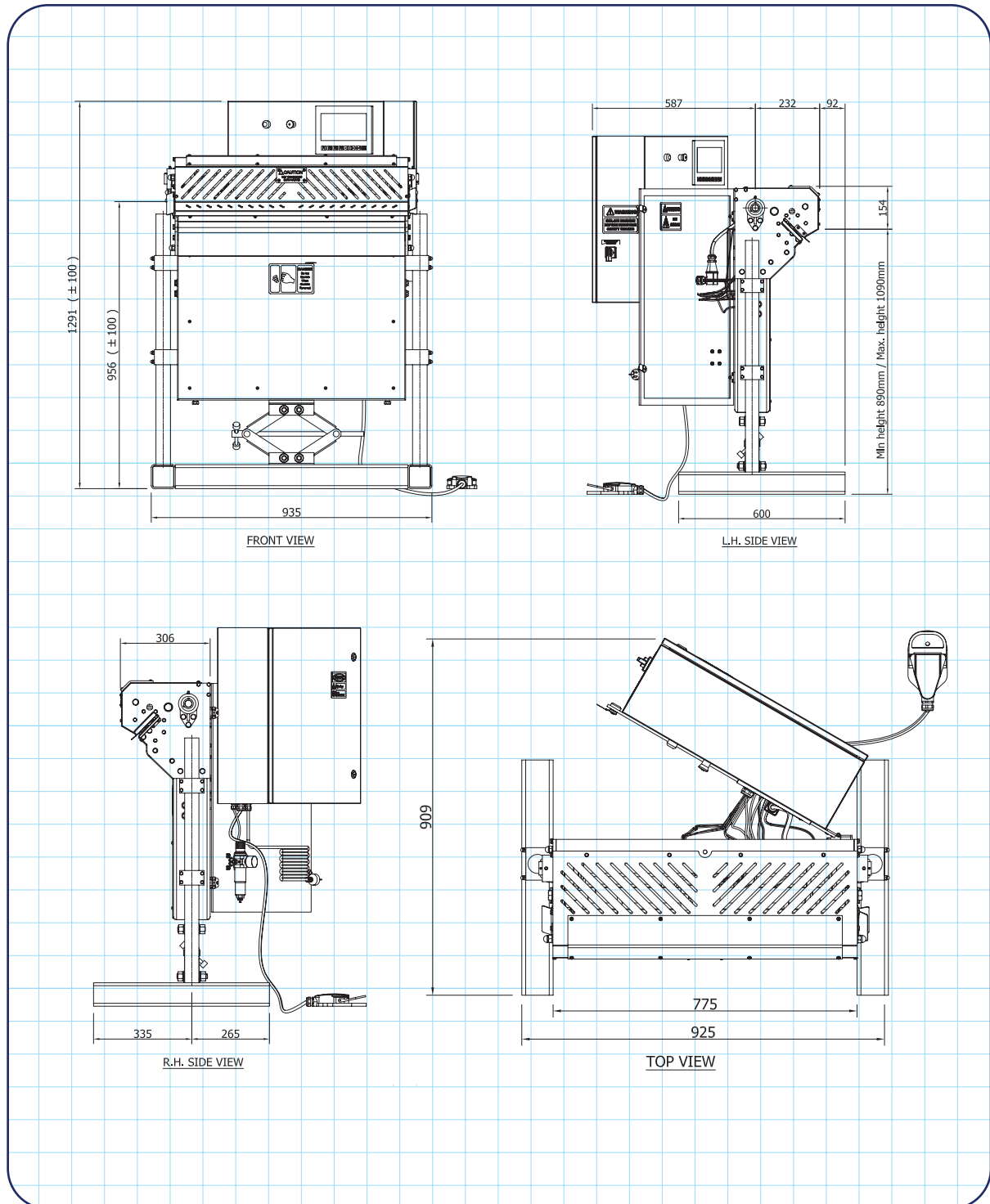
Can seal all types of linear materials by adjustment of heat and time

■ THE PINCH BAG CLOSER FOLDS & SEALS PBOM BAGS





■ **DIMENSIONS**





■ PINCH BAG CLOSER SPECS

Model	PBC (Pinch Bag Closer)
Speed	Up to 3 Sacks per minute
Suitable Bag Dimension	Width: 620mm (max) Height: 956mm +_ 100 mm adjustable up 200mm
Freeboard Above Product	150mm
Bag Types	POBM, (POM - Option) Flat Stepped End Bags up to 250 with single layer polyethylene liners
Air Consumption	Needs clean, cool dry air supplied at 80 PSI (5.52 bar) at 27 Litres (1 CuFM) per cycle
Power	240V AC 50 Hz 15 Amps Single Phase Other Power configuration available
Weight	150 kg



■ ORDERING

Your PBC comes with:

- HMI Touch Screen Controls
- 200 -250v AC Supply Other Power configuration (Other power configuration available)
- Foot Switch For Activation

Just plug it in, follow the Quick video tutorial and you're ready to go.

Get More Out Of Your PBC Pinch Bag Closer

- Optional bag top cleaning station
- POM Bags
- Gravity Rollers
- To retard the growth of bacteria the PBC can fitted with Nitrogen Flush Vacuum supported film transport.



■ **AWE - THE BEST IN THE BUSINESS**

AWE has built a reputation in providing world class products and services to customers from a wide range of industries for many unique applications. All the products come with AWE Quality Guarantee- giving you the assurance that they have been tested to meet or exceed the specifications and requirements of your application.

At AWE, it's more than just delivering perfectly-designed equipment, it also requires a team of dedicated people who will back you up with great service and support. Any servicing, installation and technical support issues you encounter can be addressed either onsite or remotely by our engineers and tradesmen who carry qualifications as:

- Licensed Tradesmen
- Mechanical Engineers
- Electrical Engineers
- Structural Engineers
- Draftsmen
- Fitter & Turners
- Boilermakers
- Fully Qualified Scale Makers
- Electronic Technicians
- Instrument Fitters
- Electricians
- Service Technicians
- Project Managers
- Formworkers
- Concreters



Call AWE today. We will find the right solution for your individual needs.

If you have questions about

- **weighing equipment**
- **packaging equipment**
- **bulk materials handling**
- **componentry**

call the sales team at *AWE Group* to find the right solution for your individual needs.

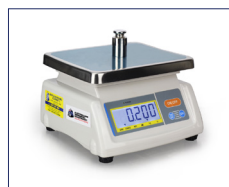
■ **AWE PRODUCT RANGE**



Weighbridges



Load Cells



Scales



Crane Scales



Indicators



Packaging Equipment



Onboard Weighing



Batching Consoles



Test Weight



Maintenance



■ WHO IS “AUSTRALIAN WEIGHING EQUIPMENT GROUP”

Jeff & Trevor Baillie started Australian Weighing Equipment (or AWE) in 1981, focusing on weighing solutions based on engineering principles. For nearly 40 years AWE has built its reputation as a leading supplier of robust weighing, packaging & bulk handling equipment. Our innovative engineering and continuous product developments have led to designs that will stand up to the rigours and demands of your applications.

AWE has increased its investment in manufacturing facilities with a new 3,200sq/m factory in Sydney which features;

- A CNC Machine Shop
- Heavy Metal Fabrication Shop
- Larger work areas for our team of qualified tradesman

Acquisitions of Bradwood Packaging and Dendy Packaging and Design Engineering has increased our packaging and engineering experience.

In 2008, AWE established a manufacturing facility in China - AWE Group Packaging and Bulk Materials Handling Equipment, a purpose-built 5,000sq/m factory in Suzhou China (70kms From Shanghai).

All of the products we offer are Australian designed and manufactured under our strict quality control system in our own factories both locally and internationally.

■ LOCATIONS OF AUSTRALIAN WEIGHING EQUIPMENT



Australian Weighing
Equipment - Sydney Office

8 Heald Road
Ingleburn NSW 2565



Australian Weighing
Equipment - Melbourne Office

37 Barrie Road
Tullamarine, VIC, 3043



Australian Weighing
Equipment - Brisbane Office

7 Darnick Street
Underwood, QLD 4119

■ AUSTRALIAN WEIGHING EQUIPMENT ON SOCIAL MEDIA



@AustralianWeighingEquipment



@australianweighingequipment



/company/awegrouppaustralia



www.youtube.com/AustWeighing



www.awe.com.au

Dealer's Information:

SCAN HERE



www.awe.com.au